

KEY INVESTOR INFORMATION

This document provides you with key investor information about this Sub-Fund. It is not marketing material. The information is required by law to help you understand the nature and the risks of investing in this Sub-Fund. You are advised to read it so you can make an informed decision about whether to invest.

LO Funds - Event Convexity, Syst. NAV Hdg, (EUR), MA

(the "Sub-Fund") a Sub-Fund of Lombard Odier Funds (the "SICAV")

Category M, Class accumulated, Currency EUR, hedged, ISIN LU1924980664 (the "Class")

This Sub-Fund is managed by Lombard Odier Funds (Europe) S.A., part of Lombard Odier Group

Objectives and Investment Policy

Objectives and Investment Policy

The Sub-Fund is actively managed. The Sub-Fund is not managed in reference to an index. The Sub-Fund's objective is to generate returns by implementing an event driven strategy. Such strategy seeks to benefit from corporate events such as, but not limited to, reorganization, restructuring, merger, acquisition, spin-off and other corporate changes that offer capital structure arbitrage opportunities: depending on the regulatory environment and possible synergies from the corporate events mentioned above, the company's stock price may deviate from the consensus price established before the event takes place. The Investment Manager combines securities across the capital structure of issuers to create asymmetric opportunities around events. The investment approach enhances traditional fundamental event driven analysis with the convexity available from the combination of equities, credit and related financial derivatives. The Sub-Fund may invest in bonds, other fixed or floating-rate debt securities and short-term debt instruments issued or guaranteed by sovereign or non-sovereign issuers, convertible bonds, equities and equity related securities, commodities,

currencies and/or Cash and Cash Equivalents, denominated in OECD currencies. The instruments described above may be of any credit quality (including below investment-grade and Distressed Securities (up to 10% of its net assets). The Investment Manager is authorized to use financial derivative instruments for hedging purposes or for efficient portfolio management as well as part of the investment strategy.

Information

- Recommendation: This Sub-Fund may not be appropriate for investors who plan to withdraw their money within 5 years.
- Dealing frequency: You may redeem shares in this Sub-Fund on demand on a weekly basis.
- The Sub-Fund is denominated in USD. This Class is in EUR. Currency risk is hedged. Currency risk is hedged between the base currency of the sub-fund and the reference currency of the share class. The hedging may not completely eliminate currency risk of positions at the portfolio level and performance may be affected.
- Distribution policy: Income accumulated.

Risk and Reward Profile



What does it mean?

This indicator (SRRRI) represents the annualized historical volatility of the Sub-Fund over a 5-year period. Where there are less than 5 years worth of data, missing returns are simulated using an appropriate benchmark. The SRRRI may change over time and should not be used as an indicator of future risk or returns. Even the lowest risk classification does not imply that the Sub-Fund is risk-free or that capital is necessarily guaranteed or protected.

Category

The Sub-Fund invests in various asset classes, taking long and short positions mainly through financial derivative instruments.

Are there any other particular risks?

The following risks may be materially relevant but may not always be

adequately captured by the synthetic risk indicator and may cause additional loss:

- Risks linked to the use of derivatives and financial techniques: Derivatives and other financial techniques used substantially to obtain, increase or reduce exposure to assets may be difficult to value, may generate leverage, and may not yield the anticipated results. All of this could be detrimental to fund performance.
- Model Risk: Models may be misspecified, badly implemented or may become inoperative when significant changes take place in the financial markets or in the organization. Such a model could unduly influence portfolio management and expose to losses.
- Financial, economic, regulatory and political risks: Financial instruments are impacted by various factors, including, without being exhaustive, the development of the financial market, the economic development of issuers who are themselves affected by the general world economic situation, and economic, regulatory and political conditions prevailing in the relevant country.

For more details about risk, see appendix B "Risk Factors" of the prospectus.

Charges

One-off charges taken before or after you invest	
Entry charge	Up to 5.00%
Exit charge	0.00%
This is the maximum that might be taken out of your money before it is invested and before the proceeds of your investment are paid out.	
Charges taken from the Class over a year	
Ongoing charge	2.00%
Charges taken from the Class under certain specific conditions	
Performance fee	20.00%

The performance fee is payable annually when the Sub-Fund exhibits a positive performance in excess of an absolute high water mark. Performance fee: 20.00% a year of any positive returns the Sub-Fund achieves. The Sub-Fund must recoup any prior losses before the investment manager may take a performance fee.

The charges you pay are used to pay the costs of running the Sub-Fund, including the costs of marketing and distributing it. These charges reduce the potential growth of your investment. The entry and exit charges shown are maximum figures. In case of a switch between sub-funds, a maximum charge of 0.50% of the value of the shares being switched will apply.

In some cases you might pay less – you can find this out from your financial adviser or distributor.

The entry and exit charges may be increased by a dealing charge of maximum 3.00% in favor of the Sub-Fund, in order to reduce the effect of portfolio transaction costs.

The ongoing charges figure is based on expenses for the 12-month period ending on the date of this document. This figure may vary from year to year. For more information about charges, see "Charges and Expenses" in section 10 of the prospectus and the relevant Sub-Fund's Appendix. The prospectus is available at www.loim.com.

Past Performances

Performance Disclaimer

Please be aware that past performance is not a reliable indicator of future results.

The performance chart shows the class's investment returns. These returns are percentage changes in the Sub-Fund's net asset value between the end of one year and the end of the following year in the currency of the Class.

Charges and Fees

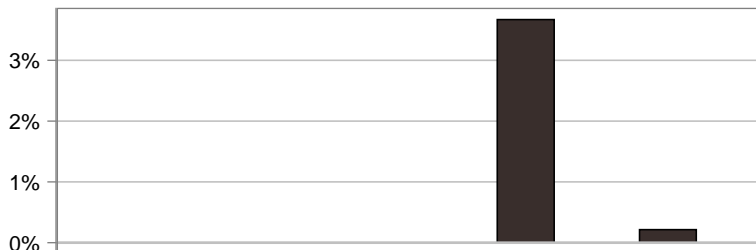
The fees for the ongoing Sub-Fund charges are included in the calculation of past performance. The entry/exit fees are excluded from the calculation of past performance.

Launch Date and Currency

Sub-Fund's launch date: October 1, 2015.

The reference currency of the Sub-Fund is USD.

Past performance was calculated in EUR.



	2017	2018	2019	2020	2021
■ LO Funds - Event Convexity, Syst. NAV Hdg, (EUR), MA				3.7%	0.2%

Material changes to the Sub-Fund occurred during the years listed below. The performance which may be observed for existing share classes of the Sub-Fund was achieved under circumstances that no longer apply.
Years: 2019

Practical Information

Depository

The depository is CACEIS Bank, Luxembourg Branch.

Price Publication

The net asset value per share is calculated daily and is available on www.loim.com and at the registered office of the SICAV.

Further Information

You can find information about the SICAV, its sub-funds and the available share classes online at www.loim.com. This includes information on how to buy or sell shares or switch between the SICAV's various sub-funds. The Prospectus and annual and semi-annual reports for the SICAV and the details of the up-to-date remuneration policy of Lombard Odier Funds (Europe) S.A. can be obtained free of charge from the website www.loim.com and from the SICAV's registered office, at 291, route d'Arlon, L-1150 Luxembourg. These documents are available in English, French and Italian.

The assets and liabilities of the Sub-Fund are segregated from the assets and liabilities of the other sub-funds of the SICAV. Third party

creditors will not have recourse to the assets of the Sub-Fund.

Tax Legislation

The Sub-Fund is subject to the tax laws and regulations of Luxembourg. Depending on your own country of residence, this might have an impact on your investment. For further details you should consult a tax adviser.

Liability Document

The SICAV may be held liable solely on the basis of any statement contained in this document that is misleading, inaccurate or inconsistent with the relevant parts of the Prospectus for the SICAV.

Switch between Sub-Funds

Provided investors meet the conditions set forth in the prospectus, they are entitled to exchange their shares in this Sub-Fund with either shares of another class of this Sub-Fund or shares of another sub-fund of the SICAV.

For more information about switch of shares, see section 14 "Conversion of Shares" of the prospectus. The prospectus is available at www.loim.com.

This Sub-Fund is authorised in Luxembourg and regulated by the Commission de Surveillance du Secteur Financier.

Lombard Odier Funds (Europe) S.A. is authorised in Luxembourg and regulated by Commission de Surveillance du Secteur Financier.

This key investor information is accurate as at January 31, 2022.