

Raiffeisen-ESG-Euro-Corporates R VTA / AT0000712534 / 071253 / Raiffeisen KAG

Last 07/30/2024 <sup>1</sup>	Region	Branch	Type of yield	Type
203.31 EUR	Worldwide	Corporate Bonds	Full reinvestment	Fixed-Income Fund



Risk key figures

SRI	1	2	3	4	5	6	7
Mountain-View Funds Rating <sup>2</sup>	EDA <sup>3</sup>						
	78						

Yearly Performance

2023	+8.01%
2022	-14.36%
2021	-1.55%
2020	+2.78%
2019	+6.80%

Master data		Conditions		Other figures	
Fund type	Single fund	Issue surcharge	3.00%	Minimum investment	UNT 0
Category	Bonds	Planned administr. fee	0.00%	Savings plan	Yes
Sub category	Corporate Bonds	Deposit fees	0.00%	UCITS / OGAW	Yes
Fund domicile	Austria	Redemption charge	0.00%	Performance fee	0.00%
Tranch volume	(07/30/2024) EUR 40.73 mill.	Ongoing charges	-	Redeployment fee	0.00%
Total volume	(07/30/2024) EUR 181.32 mill.	<b>Dividends</b>		<b>Investment company</b>	
Launch date	10/29/2002	Raiffeisen KAG			
KESt report funds	Yes	Mooslackengasse 12, 1190, Wien			
Business year start	01.02.	Austria			
Sustainability type	Ethics/ecology	https://www.rcm.at			
Fund manager	TEAM				

Performance	1M	6M	YTD	1Y	2Y	3Y	5Y	Since start
Performance	+1.46%	+1.58%	+0.97%	+5.97%	+2.89%	-8.46%	-5.99%	+93.35%
Performance p.a.	-	-	-	+5.97%	+1.44%	-2.90%	-1.23%	+3.08%
Sharpe ratio	6.01	-0.13	-0.56	0.63	-0.49	-1.47	-1.20	-0.19
Volatility	2.73%	3.52%	3.49%	3.68%	4.51%	4.47%	4.08%	3.01%
Worst month	-	-0.75%	-0.75%	-1.47%	-4.09%	-4.55%	-7.78%	-7.78%
Best month	-	1.39%	3.03%	3.03%	5.18%	5.18%	5.18%	5.18%
Maximum loss	-0.29%	-1.34%	-1.34%	-2.00%	-8.56%	-18.60%	-18.60%	-

Distribution permission

Austria, Germany, Switzerland

<sup>1</sup> Important note on update status: The displayed date refers exclusively to the calculation of the NAV.  
<sup>2</sup> The Mountain-View Data Fund Rating calculates a comparative ranking for funds using yield, volatility and trend data. For more information visit [MVD Funds Rating](#)  
<sup>3</sup> Displays the Ethical-Dynamical Ratio calculated according to standard criteria. The maximum value is 100. For more information visit [EDA](#)

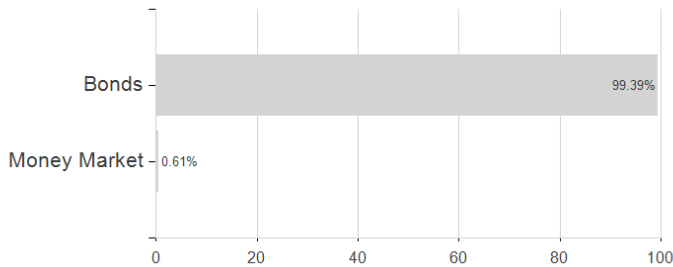
**Raiffeisen-ESG-Euro-Corporates R VTA / AT0000712534 / 071253 / Raiffeisen KAG**

**Investment goal**

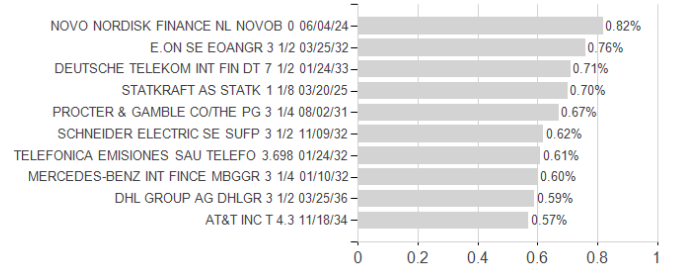
Raiffeisen-EuroCorporate-Bonds invests mainly in corporate bonds with higher rating grades (investment grade) denominated in EUR. The fund is actively managed, with the entire maturity curve taken into consideration. Currency risk is precluded. As Raiffeisen-EuroCorporate-Bonds invests mainly in bonds, the value of the units can be affected especially by changes in interest rates. This fund is particularly suitable for investors who wish to take advantage of bond diversification as an alternative to a direct investment.

**Assessment Structure**

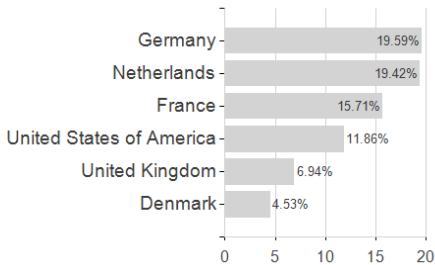
**Assets**



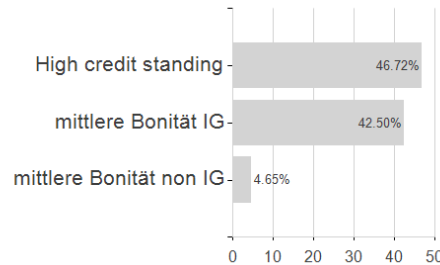
**Largest positions**



**Countries**



**Rating**



**Currencies**

