

Raiffeisen-Mehrwert-ESG 2029 (I) VTA / AT0000A39GS2 / 0A39GS / Raiffeisen KAG

Last 07/25/2024 ¹	Region	Branch	Type of yield	Type
101.75 EUR	Worldwide	Bonds: Mixed	Full reinvestment	Fixed-Income Fund



Risk key figures

SRI	1	2	3	4	5	6	7
Mountain-View Funds Rating ²							EDA ³
							-

Yearly Performance

Master data		Conditions		Other figures	
Fund type	Single fund	Issue surcharge	2.00%	Minimum investment	EUR 500,000.00
Category	Bonds	Planned administr. fee	0.00%	Savings plan	-
Sub category	Bonds: Mixed	Deposit fees	0.00%	UCITS / OGAW	Yes
Fund domicile	Austria	Redemption charge	1.00%	Performance fee	0.00%
Tranch volume	(07/25/2024) EUR 0.001 mill.	Ongoing charges	-	Redeployment fee	0.00%
Total volume	(07/25/2024) EUR 48.94 mill.	Dividends		Investment company	
Launch date	3/20/2024	Raiffeisen KAG Mooslackengasse 12, 1190, Wien Austria https://www.rcm.at			
KESt report funds	Yes				
Business year start	29.02.				
Sustainability type	Ethics/ecology				
Fund manager	TEAM				

Performance	1M	6M	YTD	1Y	2Y	3Y	5Y	Since start
Performance	+1.06%	-	-	-	-	-	-	+1.75%
Performance p.a.	-	-	-	-	-	-	-	-
Sharpe ratio	7.35	-	-	-	-	-	-	0.66
Volatility	1.37%	0.00%	0.00%	0.00%	0.00%	0.00%	0.00%	2.15%
Worst month	-	-0.30%	-0.30%	-0.30%	0.00%	0.00%	0.00%	-0.30%
Best month	-	1.04%	1.04%	1.04%	0.00%	0.00%	0.00%	1.04%
Maximum loss	-0.13%	0.00%	0.00%	0.00%	0.00%	0.00%	0.00%	-

Distribution permission

Austria

1 Important note on update status: The displayed date refers exclusively to the calculation of the NAV.

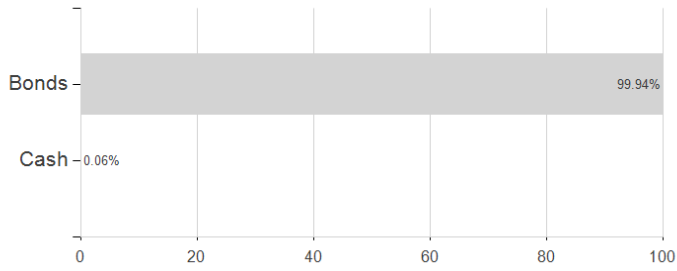
2 The Mountain-View Data Fund Rating calculates a comparative ranking for funds using yield, volatility and trend data. For more information visit [MVD Funds Rating](#)

3 Displays the Ethical-Dynamical Ratio calculated according to standard criteria. The maximum value is 100. For more information visit [EDA](#)

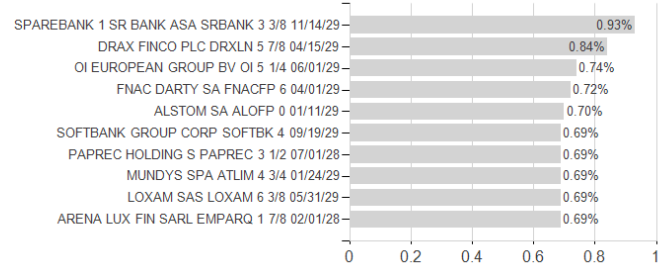
Raiffeisen-Mehrwert-ESG 2029 (I) VTA / AT0000A39GS2 / 0A39GS / Raiffeisen KAG

Assessment Structure

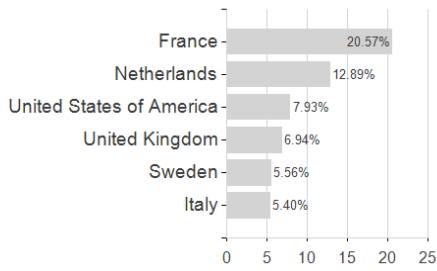
Assets



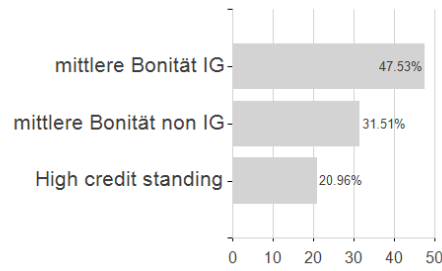
Largest positions



Countries



Rating



Currencies

