

Lazard Euro Corp High Yield PC EUR / FR001400H3H5 / A3EWLZ / Lazard Fr. Gestion

| | | | | |
|------------------------------|--------|-----------------|---------------|-------------------|
| Last 09/12/2024 ¹ | Region | Branch | Type of yield | Type |
| 1129.83 EUR | Europe | Corporate Bonds | reinvestment | Fixed-Income Fund |



Risk key figures

SRI: 1 2 **3** 4 5 6 7

Mountain-View Funds Rating²: EDA³

▲ ▲ ▲ ▲ ▲ ▲

Yearly Performance

| Master data | | Conditions | | Other figures | |
|---------------------|-------------------------------|------------------------------------|-------|---------------------------|-------|
| Fund type | Single fund | Issue surcharge | 4.00% | Minimum investment | UNT 1 |
| Category | Bonds | Planned administr. fee | 0.00% | Savings plan | - |
| Sub category | Corporate Bonds | Deposit fees | 0.00% | UCITS / OGAW | Yes |
| Fund domicile | France | Redemption charge | 0.00% | Performance fee | 0.00% |
| Tranch volume | (09/12/2024) EUR 50.12 mill. | Ongoing charges | - | Redeployment fee | 0.00% |
| Total volume | (09/12/2024) EUR 314.09 mill. | Dividends | | Investment company | |
| Launch date | 4/21/2023 | Lazard Fr. Gestion | | | |
| KESt report funds | Yes | Avenue Louise 326, 1050, Bruxelles | | | |
| Business year start | 01.10. | Belgium | | | |
| Sustainability type | - | www.lazard.com | | | |
| Fund manager | Alexia LATORRE | | | | |

| Performance | 1M | 6M | YTD | 1Y | 2Y | 3Y | 5Y | Since start |
|------------------|--------|--------|--------|--------|-------|-------|-------|-------------|
| Performance | +0.90% | +3.27% | +4.35% | - | - | - | - | +4.35% |
| Performance p.a. | - | - | - | - | - | - | - | - |
| Sharpe ratio | 6.67 | 1.68 | - | - | - | - | - | 1.65 |
| Volatility | 1.15% | 1.86% | 0.00% | 0.00% | 0.00% | 0.00% | 0.00% | 1.89% |
| Worst month | - | -0.07% | -0.07% | -0.07% | 0.00% | 0.00% | 0.00% | -0.07% |
| Best month | - | 1.19% | 1.19% | 1.19% | 0.00% | 0.00% | 0.00% | 1.19% |
| Maximum loss | -0.21% | -0.79% | 0.00% | 0.00% | 0.00% | 0.00% | 0.00% | - |

Distribution permission

Austria, Germany, Switzerland, Czech Republic

1 Important note on update status: The displayed date refers exclusively to the calculation of the NAV.

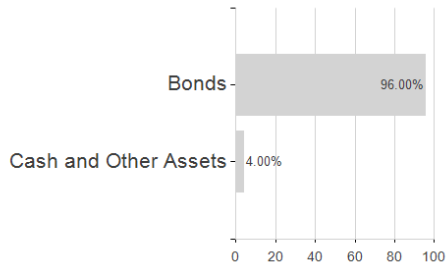
2 The Mountain-View Data Fund Rating calculates a comparative ranking for funds using yield, volatility and trend data. For more information visit [MVD Funds Rating](#)

3 Displays the Ethical-Dynamical Ratio calculated according to standard criteria. The maximum value is 100. For more information visit [EDA](#)

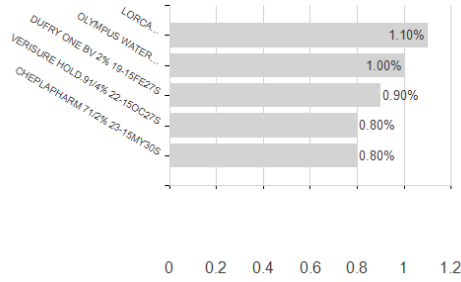
Lazard Euro Corp High Yield PC EUR / FR001400H3H5 / A3EWLZ / Lazard Fr. Gestion

Assessment Structure

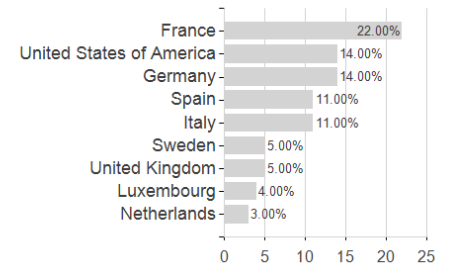
Assets



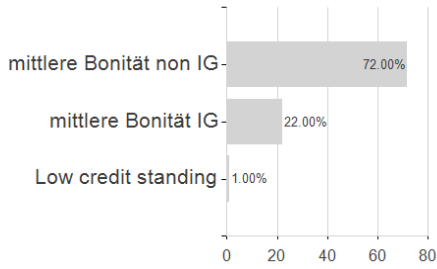
Largest positions



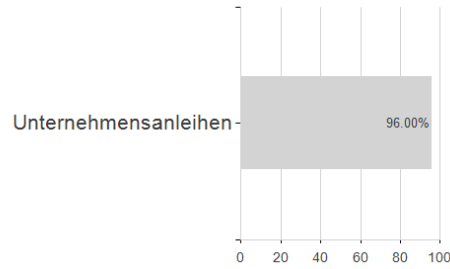
Countries



Rating



Issuer



Duration

