

Lazard Credit 2024 RC H-EUR / FR0013399805 / A2PJM6 / Lazard Fr. Gestion

|                              |           |              |               |                   |
|------------------------------|-----------|--------------|---------------|-------------------|
| Last 07/25/2024 <sup>1</sup> | Region    | Branch       | Type of yield | Type              |
| 115.64 EUR                   | Worldwide | Bonds: Mixed | reinvestment  | Fixed-Income Fund |



Risk key figures

|   |                  |   |   |   |   |   |   |
|---|------------------|---|---|---|---|---|---|
| SRI                                     | 1                | 2 | 3 | 4 | 5 | 6 | 7 |
| Mountain-View Funds Rating <sup>2</sup> | EDA <sup>3</sup> |   |   |   |   |   |   |
|   | -                |   |   |   |   |   |   |

Yearly Performance

| Master data         |                             | Conditions                         |       | Other figures             |              |
|---------------------|-----------------------------|------------------------------------|-------|---------------------------|--------------|
| Fund type           | Single fund                 | Issue surcharge                    | 1.00% | Minimum investment        | EUR 1,000.00 |
| Category            | Bonds                       | Planned administr. fee             | 0.00% | Savings plan              | -            |
| Sub category        | Bonds: Mixed                | Deposit fees                       | 0.00% | UCITS / OGAW              | Yes          |
| Fund domicile       | France                      | Redemption charge                  | 0.00% | Performance fee           | 0.00%        |
| Tranch volume       | (07/25/2024) EUR 7.95 mill. | Ongoing charges                    | -     | Redeployment fee          | 0.00%        |
| Total volume        | -                           | <b>Dividends</b>                   |       | <b>Investment company</b> |              |
| Launch date         | 3/4/2019                    | Lazard Fr. Gestion                 |       |                           |              |
| KESt report funds   | No                          | Avenue Louise 326, 1050, Bruxelles |       |                           |              |
| Business year start | 01.01.                      | Belgium                            |       |                           |              |
| Sustainability type | -                           | www.lazard.com                     |       |                           |              |
| Fund manager        | Alexia Latorre              |                                    |       |                           |              |

| Performance      | 1M     | 6M     | YTD    | 1Y    | 2Y    | 3Y    | 5Y    | Since start |
|------------------|--------|--------|--------|-------|-------|-------|-------|-------------|
| Performance      | +0.29% | +2.16% | +2.42% | -     | -     | -     | -     | +2.42%      |
| Performance p.a. | -      | -      | -      | -     | -     | -     | -     | -           |
| Sharpe ratio     | -0.51  | 2.61   | -      | -     | -     | -     | -     | 3.17        |
| Volatility       | 0.10%  | 0.26%  | 0.00%  | 0.00% | 0.00% | 0.00% | 0.00% | 0.27%       |
| Worst month      | -      | 0.23%  | 0.23%  | 0.23% | 0.00% | 0.00% | 0.00% | 0.23%       |
| Best month       | -      | 0.44%  | 0.44%  | 0.44% | 0.00% | 0.00% | 0.00% | 0.44%       |
| Maximum loss     | 0.00%  | -0.03% | 0.00%  | 0.00% | 0.00% | 0.00% | 0.00% | -           |

<sup>1</sup> Important note on update status: The displayed date refers exclusively to the calculation of the NAV.

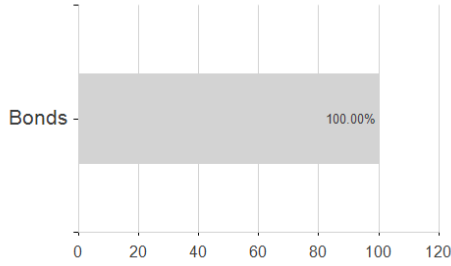
<sup>2</sup> The Mountain-View Data Fund Rating calculates a comparative ranking for funds using yield, volatility and trend data. For more information visit [MVD Funds Rating](#)

<sup>3</sup> Displays the Ethical-Dynamical Ratio calculated according to standard criteria. The maximum value is 100. For more information visit [EDA](#)

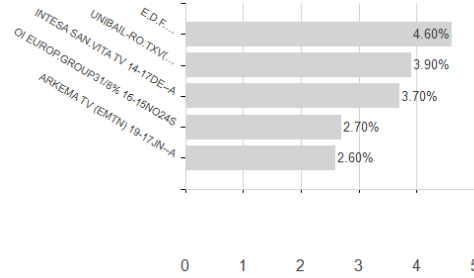
**Lazard Credit 2024 RC H-EUR / FR0013399805 / A2PJM6 / Lazard Fr. Gestion**

**Assessment Structure**

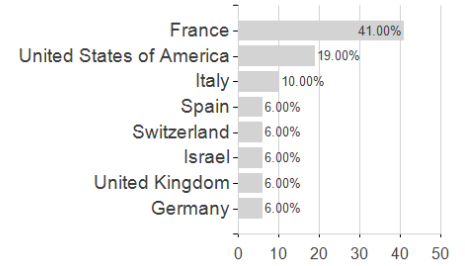
**Assets**



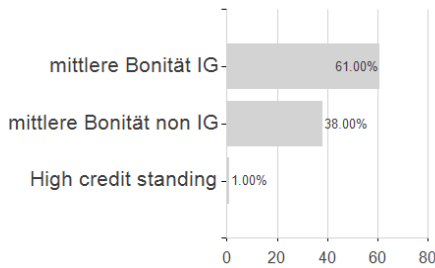
**Largest positions**



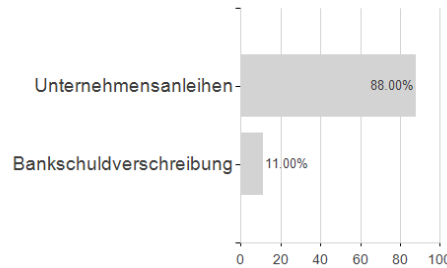
**Countries**



**Rating**



**Issuer**



**Duration**

