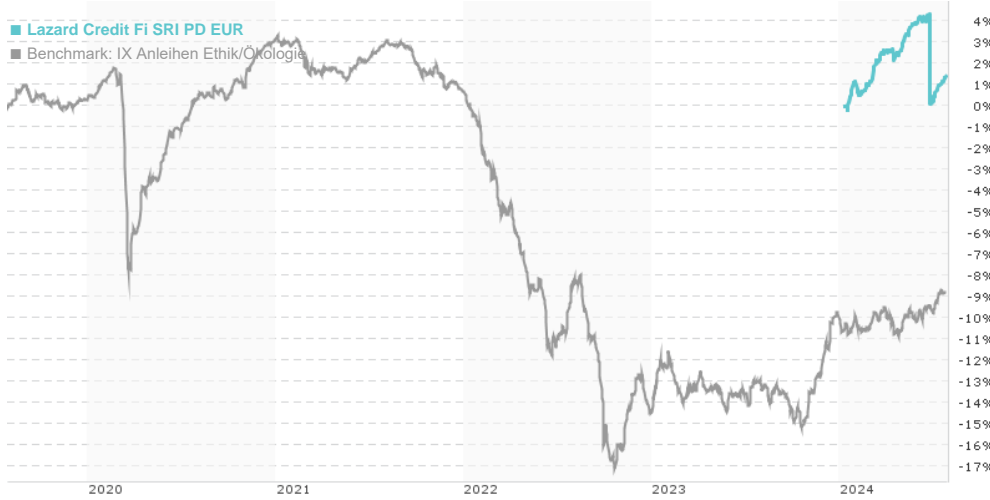


Lazard Credit Fi SRI PD EUR / FR0013306743 / A2JE87 / Lazard Fr. Gestion

Last 07/26/2024 ¹	Region	Branch	Type of yield	Type
970.83 EUR	Worldwide	Corporate Bonds	paying dividend	Fixed-Income Fund



Risk key figures

SRI: 1 2 **3** 4 5 6 7

Mountain-View Funds Rating²: EDA³

▲ ▲ ▲ ▲ ▲ ▲

Yearly Performance

Master data		Conditions		Other figures	
Fund type	Single fund	Issue surcharge	4.00%	Minimum investment	UNT 1
Category	Bonds	Planned administr. fee	0.00%	Savings plan	-
Sub category	Corporate Bonds	Deposit fees	0.00%	UCITS / OGAW	Yes
Fund domicile	France	Redemption charge	0.00%	Performance fee	0.00%
Tranch volume	(07/26/2024) EUR 81.81 mill.	Ongoing charges	-	Redeployment fee	0.00%
Total volume	(07/26/2024) EUR 2,060.79 mill.	Dividends		Investment company	
Launch date	3/9/2018	Lazard Fr. Gestion			
KESr report funds	No	Avenue Louise 326, 1050, Bruxelles			
Business year start	01.04.	Belgium			
Sustainability type	Ethics/ecology	www.lazard.com			
Fund manager	François LAVIER, Alexis Lautrette, Charles Marcoux				

Performance	1M	6M	YTD	1Y	2Y	3Y	5Y	Since start
Performance	+1.28%	+0.48%	+1.40%	-	-	-	-	+1.40%
Performance p.a.	-	-	-	-	-	-	-	-
Sharpe ratio	14.12	-0.46	-	-	-	-	-	-0.19
Volatility	0.93%	5.86%	0.00%	0.00%	0.00%	0.00%	0.00%	5.70%
Worst month	-	-3.69%	-3.69%	-3.69%	0.00%	0.00%	0.00%	-3.69%
Best month	-	1.55%	1.55%	1.55%	0.00%	0.00%	0.00%	1.55%
Maximum loss	-0.05%	-4.04%	0.00%	0.00%	0.00%	0.00%	0.00%	-

Distribution permission

Austria, Germany, Switzerland

¹ Important note on update status: The displayed date refers exclusively to the calculation of the NAV.

² The Mountain-View Data Fund Rating calculates a comparative ranking for funds using yield, volatility and trend data. For more information visit [MVD Funds Rating](#)

DISCLAIMER: The information on this page are for informational purposes only and should neither an offer to sell nor a solicitation for the purchase of the security or recommendation in favor of the security to be understood. baha GmbH assumes no liability despite thorough searches for the accuracy of the data.

Funds data from: www.mountain-view.com. Fact Sheet created by: www.baha.com

Lazard Credit Fi SRI PD EUR / FR0013306743 / A2JE87 / Lazard Fr. Gestion

Investment strategy

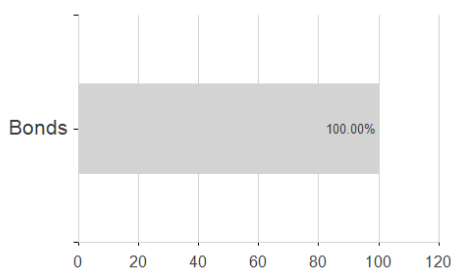
debt or any securities not considered as ordinary shares issued by financial institutions. The investment process combines a top-down approach (strategic and geographical allocation approach) and a bottom-up approach (selection of investment vehicles on a fundamental basis after analysing the credit quality of issuers and the characteristics of the securities). The Fund invests only in bonds or securities issued by issuers whose registered office is in an OECD member country and/or in issues or securities listed on a stock exchange in one of these countries. To build his portfolio, the portfolio manager conducts his own analysis of the securities. He also refers to agency ratings but does not rely on them solely and mechanically. The Fund's portfolio comprises: - up to a maximum of 100% of the net assets in securities issued by issuers in the Investment Grade category (rated as such by the rating agencies) or equivalent based on the management company's analysis and, within a limit of 30% of the net assets, in bonds or securities issued by issuers in the speculative/High Yield category (rated as such by the rating agencies) or equivalent based on the management company's analysis, or not rated by a rating agency. Speculative/High Yield bonds or securities may not exceed a maximum of 100% of the Fund's net assets. - up to a maximum of 10% of the net assets in ordinary shares arising from a conversion or exchange of debt. - up to a maximum of 10% of the net assets in French or European money market, short-term money market or bond UCITS, provided that these funds themselves invest less than 10% of their assets in other UCIs. These UCIs may be managed by Lazard Frères Gestion, - up to 100% of the net assets in securities with embedded derivatives, - up to 30% of the net assets in contingent convertible bonds ("CoCos"), - up to 100% of the net assets in interest-rate and currency futures, interest-rate and currency options, interest-rate and currency swaps, credit derivatives...

Investment goal

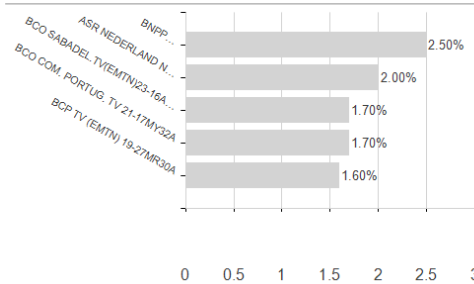
The investment objective is to achieve, by applying a Socially Responsible Investment (SRI) management approach, over the recommended investment horizon of 3 years, a return (net of charges) above the following simple benchmark: 40% ICE BofA Euro Subordinated Financial Index , 40% ICE BofA Euro Financial High Yield Index , 20% ICE BofA Contingent Capital Hedged EUR Ind. The benchmark is expressed in EUR.

Assessment Structure

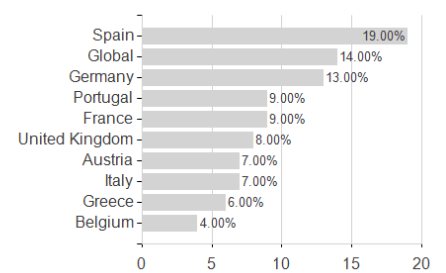
Assets



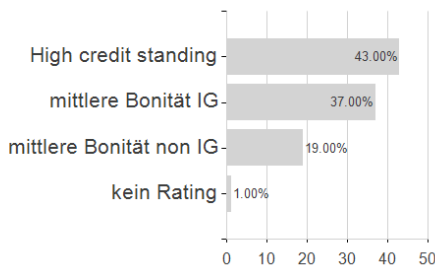
Largest positions



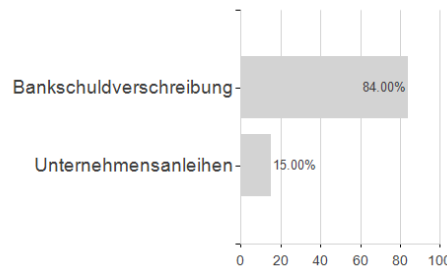
Countries



Rating



Issuer



Duration

