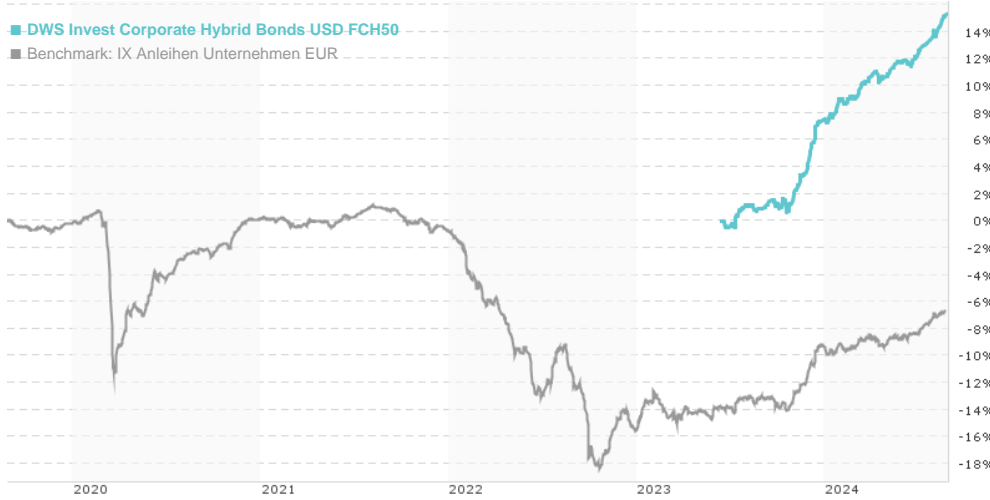


DWS Invest Corporate Hybrid Bonds USD FCH50 / LU2628678976 / DWS3JH / DWS Investment SA

Last 08/26/2024 ¹	Region	Branch	Type of yield	Type
115.32 USD	Worldwide	Corporate Bonds	reinvestment	Fixed-Income Fund



Risk key figures

SRI: 1 2 **3** 4 5 6 7

Mountain-View Funds Rating²: **EDA³**

▲▲▲▲▲▲

65

Yearly Performance

Master data		Conditions		Other figures	
Fund type	Single fund	Issue surcharge	0.00%	Minimum investment	USD 2,000,000.00
Category	Bonds	Planned administr. fee	0.00%	Savings plan	-
Sub category	Corporate Bonds	Deposit fees	0.00%	UCITS / OGAW	Yes
Fund domicile	Luxembourg	Redemption charge	0.00%	Performance fee	0.00%
Tranch volume	(08/26/2024) EUR 0.012 mill.	Ongoing charges	-	Redeployment fee	0.00%
Total volume	(06/28/2024) EUR 240.30 mill.	Dividends		Investment company	
Launch date	6/15/2023			DWS Investment SA	
KESt report funds	No			Mainzer Landstraße 11-17, 60329, Frankfurt am Main	
Business year start	01.01.			Germany	
Sustainability type	-			https://www.dws.de	
Fund manager	Berger, Max				

Performance	1M	6M	YTD	1Y	2Y	3Y	5Y	Since start
Performance	+1.59%	+5.53%	+7.26%	+14.22%	-	-	-	+15.32%
Performance p.a.	-	-	-	+14.27%	-	-	-	+12.61%
Sharpe ratio	8.66	5.26	5.10	5.43	-	-	-	4.57
Volatility	1.94%	1.50%	1.54%	1.99%	0.00%	0.00%	0.00%	1.99%
Worst month	-	-0.03%	-0.03%	-0.14%	-0.14%	0.00%	0.00%	-0.14%
Best month	-	1.58%	3.13%	3.13%	3.13%	0.00%	0.00%	3.13%
Maximum loss	-0.42%	-0.79%	-0.79%	-1.04%	0.00%	0.00%	0.00%	-

Distribution permission

Austria, Germany, Switzerland, Czech Republic

¹ Important note on update status: The displayed date refers exclusively to the calculation of the NAV.

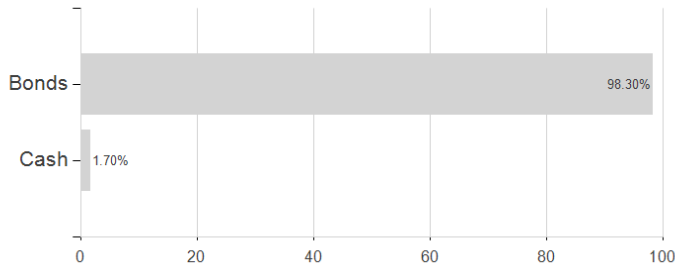
² The Mountain-View Data Fund Rating calculates a comparative ranking for funds using yield, volatility and trend data. For more information visit [MVD Funds Rating](#)

³ Displays the Ethical-Dynamical Ratio calculated according to standard criteria. The maximum value is 100. For more information visit [EDA](#)

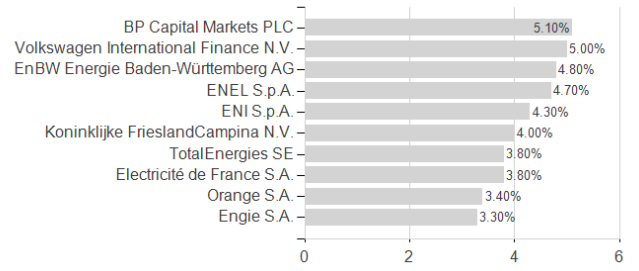
DWS Invest Corporate Hybrid Bonds USD FCH50 / LU2628678976 / DWS3JH / DWS Investment SA

Assessment Structure

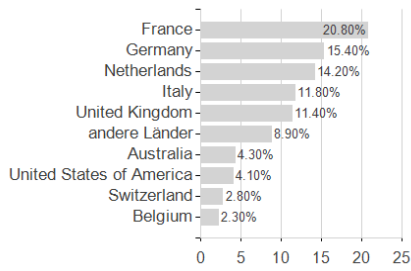
Assets



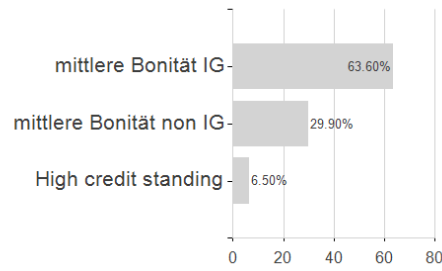
Largest positions



Countries



Rating



Currencies

