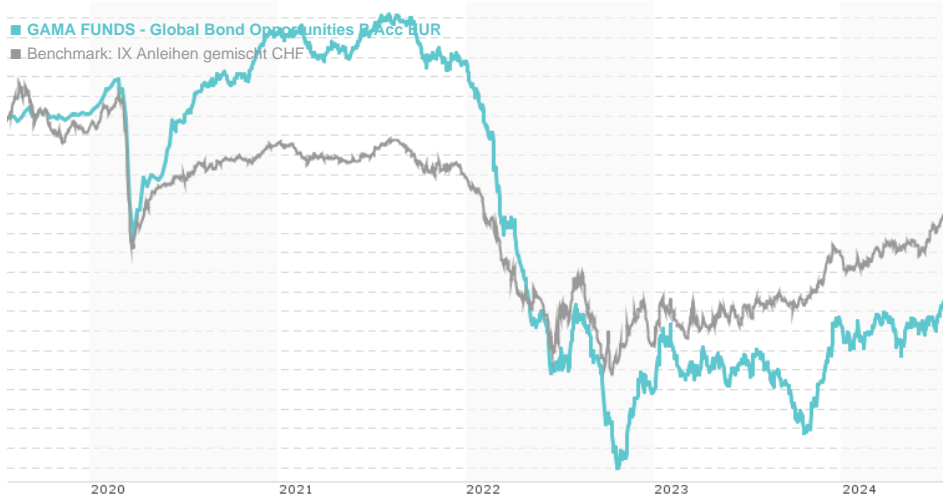


**GAMA FUNDS - Global Bond Opportunities P Acc EUR / LU1280945475 / GF0002 / FundPartner Sol.(EU)**

Last 07/19/2024 <sup>1</sup>	Region	Branch	Type of yield	Type
96.48 EUR	Worldwide	Bonds: Mixed	reinvestment	Fixed-Income Fund



**Risk key figures**

SRI	1	2	3	4	5	6	7
Mountain-View Funds Rating <sup>2</sup>	EDA <sup>3</sup>						
	▲▲▲▲▲▲▲						

**Yearly Performance**

2023	+4.10%
2022	-16.46%
2021	-1.39%
2020	+4.14%
2019	+3.08%

Master data		Conditions		Other figures	
Fund type	Single fund	Issue surcharge	0.00%	Minimum investment	EUR 1,000,000.00
Category	Bonds	Planned administr. fee	0.00%	Savings plan	-
Sub category	Bonds: Mixed	Deposit fees	0.00%	UCITS / OGAW	-
Fund domicile	Luxembourg	Redemption charge	0.00%	Performance fee	0.00%
Tranch volume	(07/19/2024) EUR 25.62 mill.	Ongoing charges	-	Redeployment fee	0.00%
Total volume	(07/19/2024) EUR 219.86 mill.	Dividends		Investment company	
Launch date	8/31/2015	FundPartner Sol.(EU)			
KESt report funds	No	15A, avenue J. F. Kennedy, 1855, Luxembourg			
Business year start	01.10.	Luxembourg			
Sustainability type	-	www.group.pictet/de			
Fund manager	Manuel Streiff, Rajeev De Mello, Jérôme Strecker, Christophe Forest				

Performance	1M	6M	YTD	1Y	2Y	3Y	5Y	Since start
Performance	+0.45%	+2.18%	+0.75%	+2.20%	+3.56%	-14.35%	-9.76%	-7.64%
Performance p.a.	-	-	-	+2.20%	+1.76%	-5.03%	-2.03%	-1.04%
Sharpe ratio	0.61	0.18	-0.57	-0.34	-0.37	-1.78	-1.22	-1.18
Volatility	3.11%	4.06%	4.09%	4.35%	5.23%	4.90%	4.70%	4.03%
Worst month	-	-1.84%	-1.84%	-1.86%	-4.67%	-4.67%	-5.89%	-5.89%
Best month	-	0.92%	2.77%	3.64%	3.90%	3.90%	3.90%	3.90%
Maximum loss	-0.80%	-2.50%	-2.50%	-4.94%	-9.29%	-22.09%	-22.09%	-

**Distribution permission**

Switzerland, Luxembourg

<sup>1</sup> Important note on update status: The displayed date refers exclusively to the calculation of the NAV.  
<sup>2</sup> The Mountain-View Data Fund Rating calculates a comparative ranking for funds using yield, volatility and trend data. For more information visit [MVD Funds Rating](#)  
<sup>3</sup> Displays the Ethical-Dynamical Ratio calculated according to standard criteria. The maximum value is 100. For more information visit [EDA](#)

**GAMA FUNDS - Global Bond Opportunities P Acc EUR / LU1280945475 / GF0002 / FundPartner Sol.(EU)**

**Investment strategy**

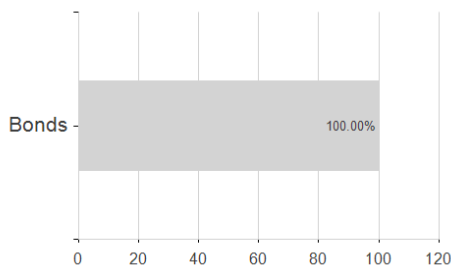
The Sub-Fund will be invested in a diversified portfolio reflecting global opportunities across the entire fixed income universe. The Sub-Fund will mainly invest directly in a diversified portfolio of debt securities of any type (including money market instruments), issued by corporate, government-related or sovereign issuers. The portfolio is expected to hold a majority of issuers from OECD-countries. Except for this geographical focus, the choice of investments will neither be limited by country (including emerging markets), economic sector nor in terms of currencies in which investments will be denominated. The Sub-Fund will be exposed to investment grade and non-investment grade debt securities (including non-rated debt securities) in proportions that will vary according to financial market conditions and investment opportunities. On an ancillary basis, the Sub-Fund may also invest in any other type of eligible assets, such as structured products, UCIs and cash.

**Investment goal**

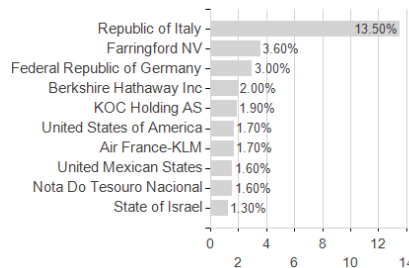
This Sub-Fund is a medium-risk vehicle aiming to provide income and capital growth in the reference currency of each share class. It may be suitable for investors who are seeking growth potential with an investment horizon of three years and more. The investment objective of the Sub-Fund is to generate returns of 4% per annum over cash rates in the medium term with a realized volatility of less than 5%. There can be no assurance that the investment objective will be achieved. The Sub-Fund is actively managed. The Sub-Fund has no benchmark index and is not managed in reference to a benchmark index.

**Assessment Structure**

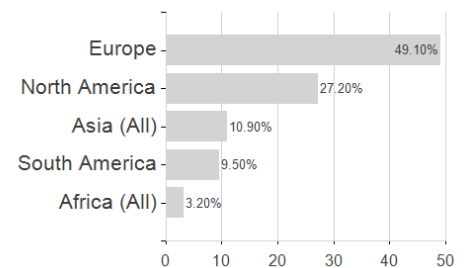
**Assets**



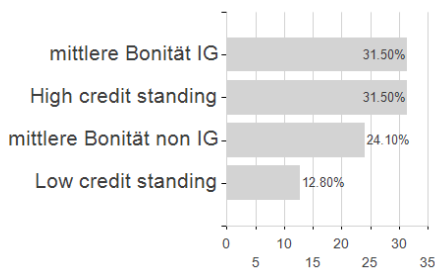
**Largest positions**



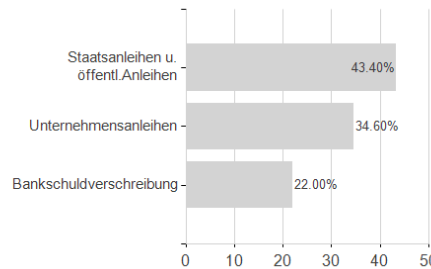
**Countries**



**Rating**



**Issuer**



**Duration**

