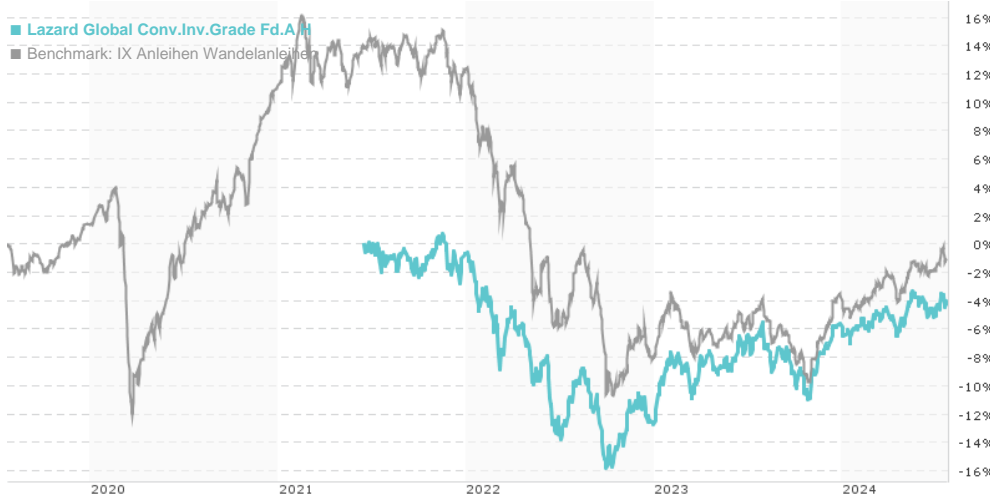


Lazard Global Conv.Inv.Grade Fd.A H / IE00BMW27Q22 / A3CM0P / Lazard Fund M. (IE)

Last 07/23/2024 ¹	Region	Branch	Type of yield	Type
96.66 EUR	Worldwide	Convertible Bonds	reinvestment	Fixed-Income Fund



Risk key figures

SRI: 1 2 3 4 5 6 7

Mountain-View Funds Rating²: EDA³

▲ ▲ ▲ ▲ ▲ ▲

Yearly Performance

2023	+8.13%
2022	-12.13%

Master data		Conditions		Other figures	
Fund type	Single fund	Issue surcharge	3.00%	Minimum investment	EUR 250,000.00
Category	Bonds	Planned administr. fee	0.00%	Savings plan	-
Sub category	Convertible Bonds	Deposit fees	0.00%	UCITS / OGAW	Yes
Fund domicile	Ireland	Redemption charge	2.00%	Performance fee	0.00%
Tranch volume	(07/23/2024) EUR 0.026 mill.	Ongoing charges	-	Redeployment fee	0.00%
Total volume	(07/23/2024) EUR 106.71 mill.	Dividends		Investment company	
Launch date	5/5/2021	Lazard Fund M. (IE)			
KESt report funds	No	Ireland			
Business year start	01.04.	http://www.lazardnet.com			
Sustainability type	-				
Fund manager	Arnaud Brillois, Pierre-Alexis M. Blua, Emmanuel Cuche, Emmanuel Naar, Andrew T. Raab				

Performance	1M	6M	YTD	1Y	2Y	3Y	5Y	Since start
Performance	+0.39%	+1.98%	+1.50%	+2.34%	+7.47%	-3.64%	-	-4.13%
Performance p.a.	-	-	-	+2.34%	+3.67%	-1.23%	-	-1.35%
Sharpe ratio	0.86	0.14	-0.16	-0.25	0.01	-0.77	-	-0.80
Volatility	4.40%	4.24%	4.30%	4.75%	5.55%	6.24%	0.00%	6.24%
Worst month	-	-1.18%	-1.18%	-2.05%	-5.38%	-5.65%	0.00%	-5.65%
Best month	-	1.56%	1.72%	4.15%	4.83%	4.83%	0.00%	4.83%
Maximum loss	-0.94%	-2.18%	-2.18%	-5.76%	-7.79%	-16.46%	0.00%	-

Distribution permission

Austria, Germany, Switzerland

¹ Important note on update status: The displayed date refers exclusively to the calculation of the NAV.

² The Mountain-View Data Fund Rating calculates a comparative ranking for funds using yield, volatility and trend data. For more information visit [MVD Funds Rating](#)

DISCLAIMER: The information on this page are for informational purposes only and should neither an offer to sell nor a solicitation for the purchase of the security or recommendation in favor of the security to be understood. baha GmbH assumes no liability despite thorough searches for the accuracy of the data.

Funds data from: www.mountain-view.com. Fact Sheet created by: www.baha.com

Lazard Global Conv.Inv.Grade Fd.A H / IE00BMW27Q22 / A3CM0P / Lazard Fund M. (IE)

Investment strategy

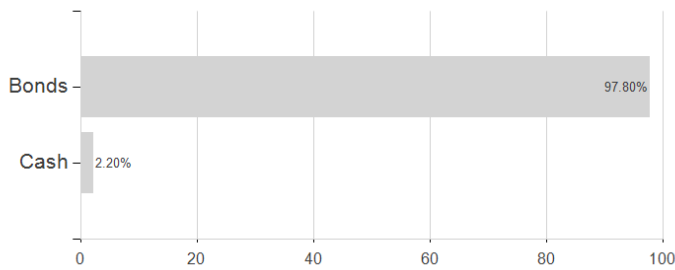
The Fund also has flexibility to invest up to 100% of its value in emerging markets. The Fund does not intend to invest directly in equities, however, the Fund may from time to time hold equity securities on an ancillary basis up to a limit of 10% of the value of the Fund. The Fund may gain exposure to the asset classes above either by investing in them directly, or by using derivatives (which are financial contracts whose value is linked to the price of an underlying investment). The currency exposures of the Fund's portfolio may be hedged back into Euro, being the base currency of the Fund. As a result of its use of derivatives, the Fund may be 'geared' or 'leveraged' (which can lead to a proportionately much larger movement in the value of the Fund's assets). The expected level of the Fund's leverage will be 100% of the value of the Fund. The Fund has discretion as to which investments it will hold within the limits of the Investment Objective and Policy.

Investment goal

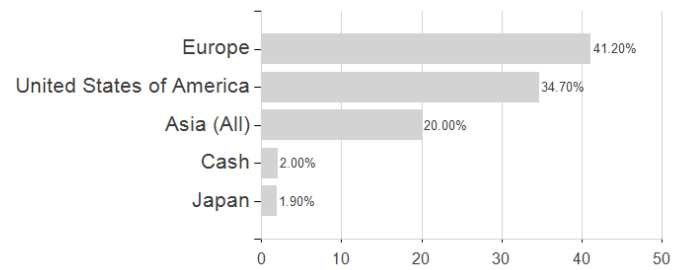
The Fund aims to maximise total return from income and capital growth. The Fund is actively managed and will primarily invest in convertible bonds (i.e. debt securities that are convertible into the equity securities of the issuer) which the Investment Manager has determined qualify as investment grade. Investment in unrated convertible bonds and/or other debt securities that are deemed by the Investment Manager to be of an equivalent rating to investment grade shall not in aggregate exceed 5% of the Fund's value. Investment in convertible bonds and/or other debt securities that qualify as or are deemed non-investment grade shall not in aggregate exceed 5% of the Fund's value. The Fund will also invest in investment grade, non-graded investments, unrated convertible bonds and/or debt securities (e.g. bonds) which are issued by companies, governments, government agencies, quasi sovereign bodies or supranational bodies (such as the World Bank) across the world.

Assessment Structure

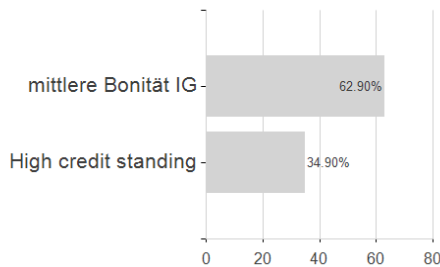
Assets



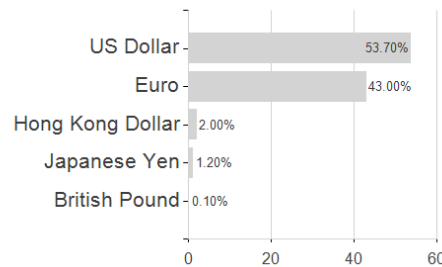
Countries



Rating



Currencies



Branches

