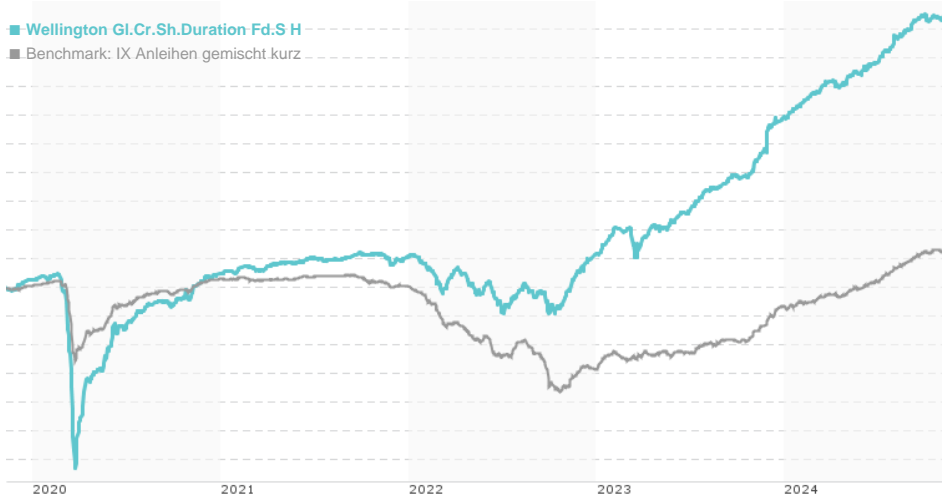


Wellington Gl.Cr.Sh.Duration Fd.S H / IE00BMNQXG50 / A14UD4 / Wellington M.Fd.(IE)

Last 11/08/2024 ¹	Region	Branch	Type of yield	Type
13.06 GBP	Worldwide	Bonds: Mixed	reinvestment	Fixed-Income Fund



Risk key figures

SRI	1	2	3	4	5	6	7
Mountain-View Funds Rating ²	EDA ³						
	▲▲▲▲▲▲▲						

Yearly Performance

2023	+9.20%
2022	+0.28%
2021	+1.14%
2020	+0.42%
2019	+4.88%

Master data		Conditions		Other figures	
Fund type	Single fund	Issue surcharge	0.00%	Minimum investment	USD 1,000,000.00
Category	Bonds	Planned administr. fee	0.00%	Savings plan	-
Sub category	Bonds: Mixed	Deposit fees	0.00%	UCITS / OGAW	Yes
Fund domicile	Ireland	Redemption charge	0.00%	Performance fee	0.00%
Tranch volume	(11/08/2024) USD 0.017 mill.	Ongoing charges	-	Redeployment fee	0.00%
Total volume	(11/08/2024) USD 114.90 mill.	Dividends		Investment company	
Launch date	6/18/2014	Wellington M.Fd.(IE)			
KESt report funds	Yes	Cardinal Place, 80 Victoria Street, SW1E 5JL, London			
Business year start	01.01.	United Kingdom			
Sustainability type	-	https://www.wellingtonfunds.com			
Fund manager	Mahmoud El-Shaer				

Performance	1M	6M	YTD	1Y	2Y	3Y	5Y	Since start
Performance	+0.23%	+3.62%	+6.33%	+9.25%	+19.14%	+16.16%	+19.04%	+22.91%
Performance p.a.	-	-	-	+9.22%	+9.14%	+5.12%	+3.54%	+2.98%
Sharpe ratio	-0.28	3.51	3.76	3.64	3.29	1.03	0.18	-0.02
Volatility	0.93%	1.22%	1.18%	1.71%	1.86%	2.03%	2.81%	2.44%
Worst month	-	-0.21%	-0.21%	-0.21%	-0.53%	-1.88%	-9.14%	-9.14%
Best month	-	1.14%	1.14%	2.68%	2.68%	2.68%	3.80%	3.80%
Maximum loss	-0.27%	-0.37%	-0.45%	-0.45%	-2.06%	-4.11%	-13.44%	-

Distribution permission

Austria, Germany, Switzerland, Czech Republic

¹ Important note on update status: The displayed date refers exclusively to the calculation of the NAV.
² The Mountain-View Data Fund Rating calculates a comparative ranking for funds using yield, volatility and trend data. For more information visit [MVD Funds Rating](#)
³ Displays the Ethical-Dynamical Ratio calculated according to standard criteria. The maximum value is 100. For more information visit [EDA](#)

Wellington Gl.Cr.Sh.Duration Fd.S H / IE00BMNQXG50 / A14UD4 / Wellington M.Fd.(IE)

Investment strategy

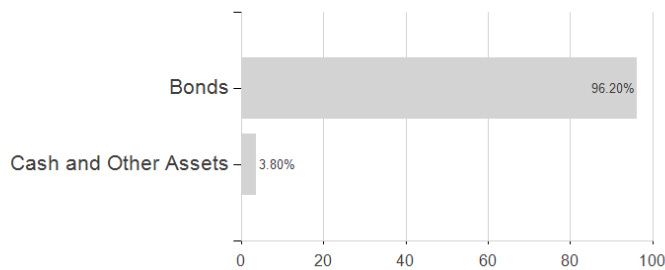
investment grade corporate bonds globally. It may also invest in securities issued by government, agency, supranational or corporate issuers, mortgage and other asset-backed securities. Below investment grade securities will be limited to 20% of the net assets of the Fund at the time of purchase. Derivatives may be used to hedge (manage) risk and for investment purposes (such as gaining exposure to a security). The Index serves as a reference benchmark for performance comparison and market context purposes only. Whilst Fund securities may be components of the Index, the Index is not considered during portfolio construction and the Investment Manager will not manage the extent to which Fund securities differ from the Index. The Index is a market capitalisation weighted index and is comprised of fixed income securities from a broad array of geographies and sectors under the corporate umbrella, with maturities between 1 and 3 years. The Fund will seek to support certain environmental characteristics by aiming to achieve net zero emissions by 2050 in alignment with the Paris Agreement, by investing a minimum of 20% of the Fund's NAV (excluding cash and cash equivalents) in companies which have established, or have committed to establish science-based targets, with this percentage increasing to a minimum of 55% by 2030, and 100% by 2040. During normal market conditions, a minimum of 20% of the Fund's net assets will be aligned to the environmental characteristics of the Fund.

Investment goal

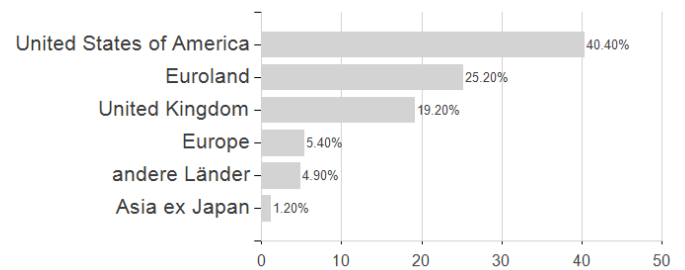
The Fund seeks long-term total returns. The Fund will be actively managed, investing primarily in debt securities. The Fund will seek long-term total returns over the Bloomberg Global Aggregate Corporate 1-3 Year Index (the "Index"), via providing exposure to credit whilst keeping portfolio turnover low and mitigating against capital erosion over the long-term. The Fund's interest rate duration (sensitivity to interest rate changes) will be managed to ensure that the total average will typically be plus or minus 0.75 years of the index. The Fund will generally be diversified by country, currency, industry, sector, issuer and market cap but may hold positions that are concentrated from time to time.

Assessment Structure

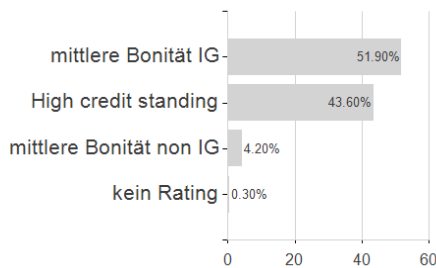
Assets



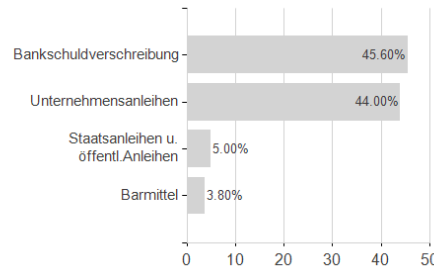
Countries



Rating



Issuer



Branches

