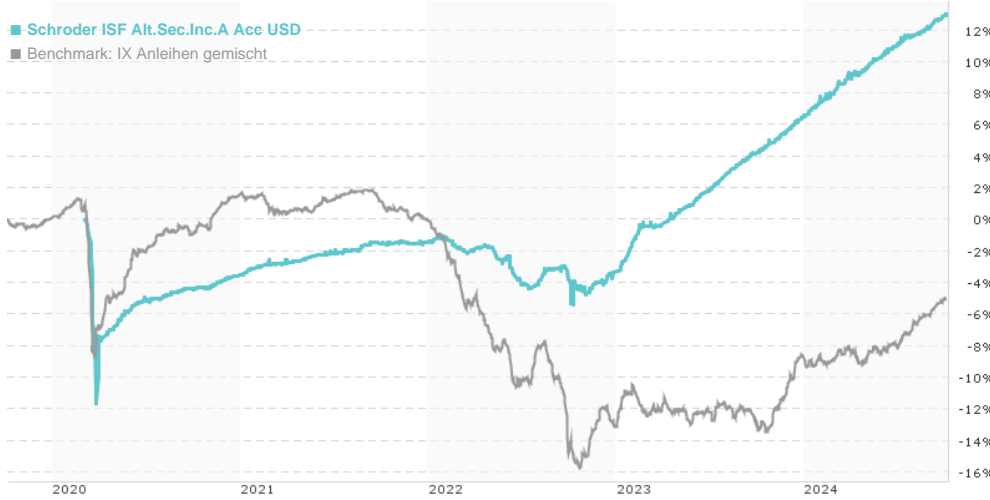


Schroder ISF Alt.Sec.Inc.A Acc USD / LU2114932085 / A2P1HM / Schroder IM (EU)

Last 10/04/2024 ¹	Region	Branch	Type of yield	Type
113.03 USD	Worldwide	Bonds: Mixed	reinvestment	Fixed-Income Fund



Risk key figures

SRI	1	2	3	4	5	6	7
Mountain-View Funds Rating ²	EDA ³						
	▲▲▲▲▲▲▲						

Yearly Performance

2023	+10.12%
2022	-1.91%
2021	+2.15%

Master data		Conditions		Other figures	
Fund type	Single fund	Issue surcharge	3.00%	Minimum investment	USD 1,000.00
Category	Bonds	Planned administr. fee	0.00%	Savings plan	-
Sub category	Bonds: Mixed	Deposit fees	0.30%	UCITS / OGAW	Yes
Fund domicile	Luxembourg	Redemption charge	0.00%	Performance fee	0.00%
Tranch volume	(10/04/2024) USD 6.76 mill.	Ongoing charges	-	Redeployment fee	0.00%
Total volume	(10/04/2024) USD 1,026.44 mill.	Dividends		Investment company	
Launch date	3/5/2020	Schroder IM (EU)			
KEST report funds	Yes	5, rue Höhenhof, 1736, Senningerberg			
Business year start	01.01.	Luxembourg			
Sustainability type	-	https://www.schroders.com			
Fund manager	Michelle Russell-Dowe				

Performance	1M	6M	YTD	1Y	2Y	3Y	5Y	Since start
Performance	+0.67%	+3.49%	+6.10%	+8.40%	+17.85%	+14.66%	-	+13.03%
Performance p.a.	-	-	-	+8.37%	+8.55%	+4.66%	-	+2.71%
Sharpe ratio	8.48	3.52	3.71	4.06	2.31	0.68	-	-0.18
Volatility	0.62%	1.09%	1.32%	1.27%	2.30%	2.10%	0.00%	3.03%
Worst month	-	0.02%	0.02%	0.02%	-0.53%	-1.66%	-1.66%	-1.66%
Best month	-	0.76%	1.16%	1.16%	1.72%	1.72%	2.45%	2.45%
Maximum loss	-0.04%	-0.18%	-0.36%	-0.36%	-1.57%	-4.40%	0.00%	-

Distribution permission

Austria, Germany, Switzerland, Luxembourg, Czech Republic

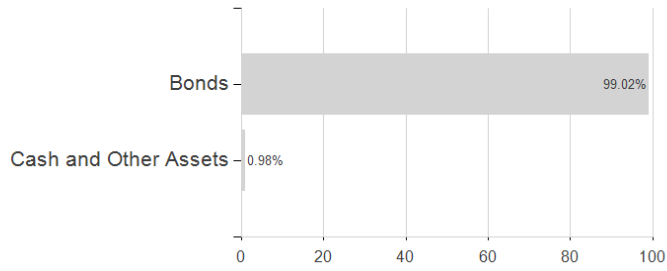
1 Important note on update status: The displayed date refers exclusively to the calculation of the NAV.
2 The Mountain-View Data Fund Rating calculates a comparative ranking for funds using yield, volatility and trend data. For more information visit [MVD Funds Rating](#)

Schroder ISF Alt.Sec.Inc.A Acc USD / LU2114932085 / A2P1HM / Schroder IM (EU)

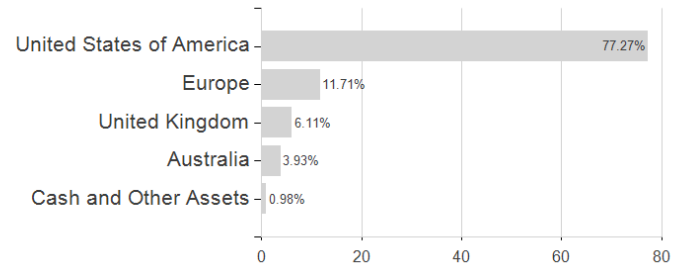
3 Displays the Ethical-Dynamical Ratio calculated according to standard criteria. The maximum value is 100. For more information visit [EDA](#)

Assessment Structure

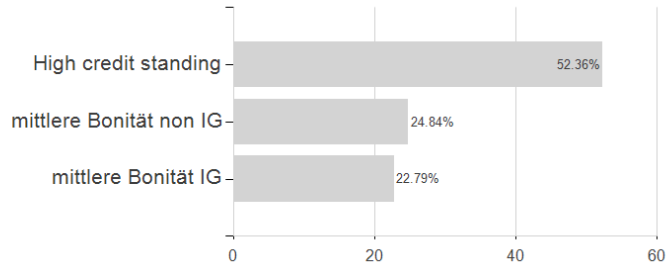
Assets



Countries



Rating



Issuer

