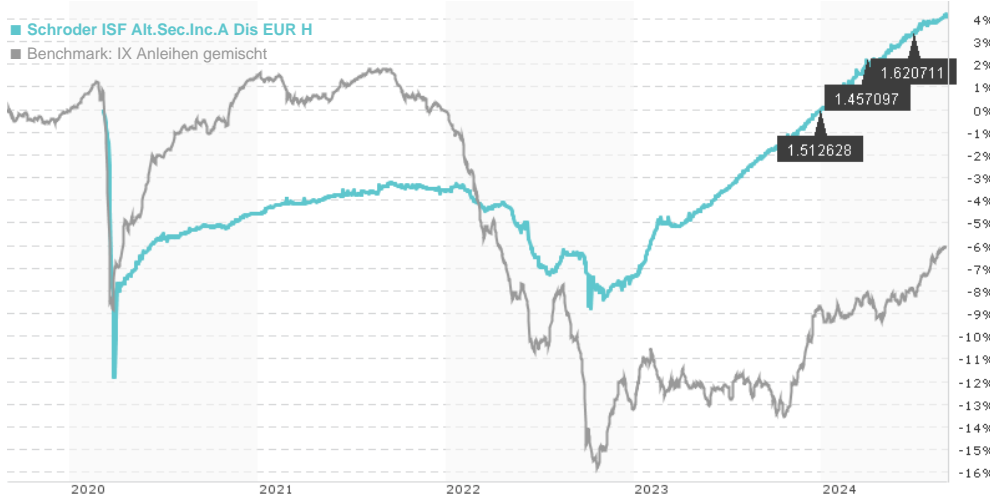


Schroder ISF Alt.Sec.Inc.A Dis EUR H / LU2114932754 / A2P1HQ / Schroder IM (EU)

Last 08/30/2024 <sup>1</sup>	Region	Branch	Type of yield	Type
86.12 EUR	Worldwide	Bonds: Mixed	paying dividend	Fixed-Income Fund



Risk key figures

SRI	1	2	3	4	5	6	7
Mountain-View Funds Rating <sup>2</sup>	EDA <sup>3</sup>						

Yearly Performance

2023	+7.91%
2022	-3.93%
2021	+1.09%

Master data		Conditions		Other figures	
Fund type	Single fund	Issue surcharge	3.00%	Minimum investment	USD 1,000.00
Category	Bonds	Planned administr. fee	0.00%	Savings plan	-
Sub category	Bonds: Mixed	Deposit fees	0.30%	UCITS / OGAW	Yes
Fund domicile	Luxembourg	Redemption charge	0.00%	Performance fee	0.00%
Tranch volume	(08/30/2024) USD 0.063 mill.	Ongoing charges	-	Redeployment fee	0.00%
Total volume	(08/30/2024) USD 997.09 mill.	<b>Dividends</b>		<b>Investment company</b>	
Launch date	3/5/2020	27.06.2024	1.62 EUR	Schroder IM (EU)	
KESt report funds	Yes	28.03.2024	1.46 EUR	5, rue Höhenhof, 1736, Senningerberg	
Business year start	01.01.	28.12.2023	1.51 EUR	Luxembourg	
Sustainability type	-	28.09.2023	1.71 EUR	https://www.schroders.com	
Fund manager	Michelle Russell-Dowe	15.06.2023	1.33 EUR		

Performance	1M	6M	YTD	1Y	2Y	3Y	5Y	Since start
Performance	+0.22%	+2.91%	+4.13%	+6.42%	+11.23%	+7.75%	-	+4.15%
Performance p.a.	-	-	-	+6.40%	+5.46%	+2.52%	-	+0.91%
Sharpe ratio	-1.23	1.83	2.01	2.28	0.83	-0.47	-	-0.84
Volatility	0.75%	1.30%	1.41%	1.28%	2.36%	2.10%	0.00%	3.08%
Worst month	-	0.14%	0.14%	0.14%	-0.85%	-1.89%	-1.89%	-1.89%
Best month	-	1.03%	1.03%	1.03%	1.46%	1.46%	2.31%	2.31%
Maximum loss	-0.10%	-0.37%	-0.37%	-0.37%	-2.65%	-5.76%	0.00%	-

Distribution permission

Austria, Germany, Switzerland, Luxembourg

<sup>1</sup> Important note on update status: The displayed date refers exclusively to the calculation of the NAV.

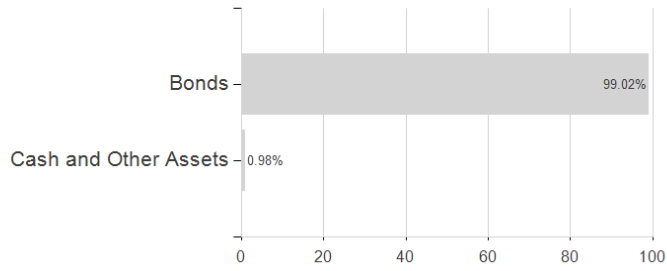
<sup>2</sup> The Mountain-View Data Fund Rating calculates a comparative ranking for funds using yield, volatility and trend data. For more information visit [MVD Funds Rating](#)

<sup>3</sup> Displays the Ethical-Dynamical Ratio calculated according to standard criteria. The maximum value is 100. For more information visit [EDA](#)

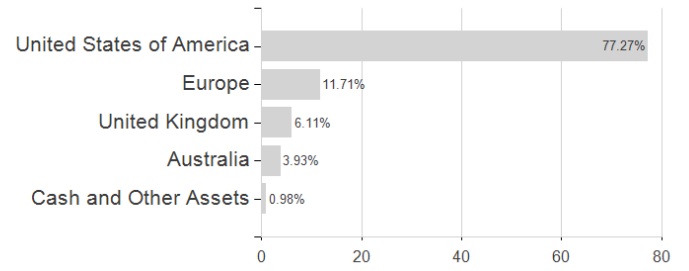
Schroder ISF Alt.Sec.Inc.A Dis EUR H / LU2114932754 / A2P1HQ / Schroder IM (EU)

Assessment Structure

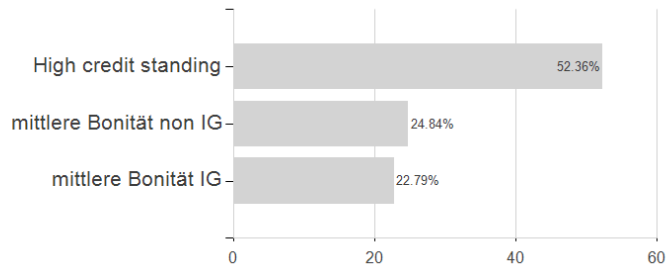
Assets



Countries



Rating



Issuer

