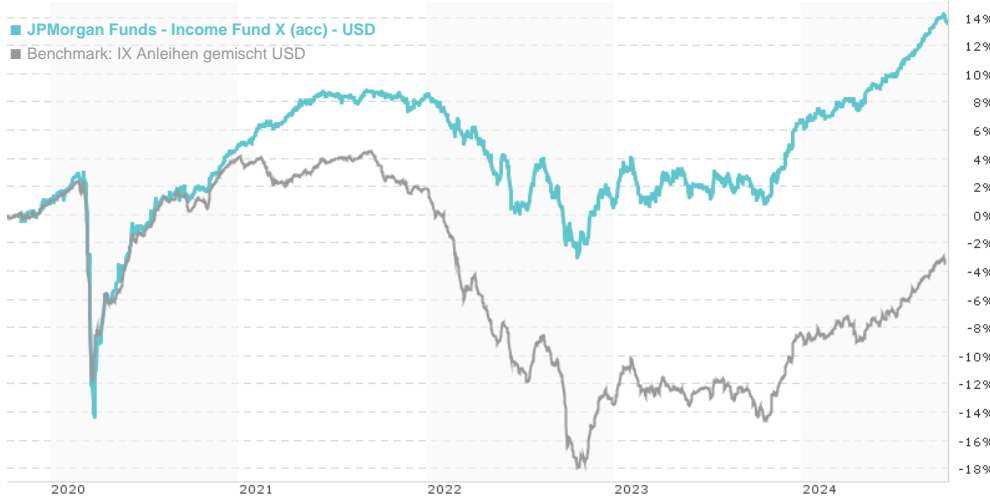


JPMorgan Funds - Income Fund X (acc) - USD / LU1041601151 / A1XFAL / JPMorgan AM (EU)

Last 10/08/2024 <sup>1</sup>	Region	Branch	Type of yield	Type
113.74 USD	Worldwide	Bonds: Mixed	reinvestment	Fixed-Income Fund



Risk key figures

SRI	1	2	3	4	5	6	7
Mountain-View Funds Rating <sup>2</sup>	EDA <sup>3</sup>						
	▲▲▲▲▲▲▲						

Yearly Performance

2023	+6.09%
2022	-7.19%
2021	+3.30%
2020	+4.15%

Master data		Conditions		Other figures	
Fund type	Single fund	Issue surcharge	0.00%	Minimum investment	UNT 0
Category	Bonds	Planned administr. fee	0.00%	Savings plan	-
Sub category	Bonds: Mixed	Deposit fees	0.00%	UCITS / OGAW	Yes
Fund domicile	Luxembourg	Redemption charge	0.00%	Performance fee	0.00%
Tranch volume	(10/08/2024) USD 436.28 mill.	Ongoing charges	-	Redeployment fee	0.00%
Total volume	(10/08/2024) USD 10,870.81 mill.	Dividends		Investment company	
Launch date	10/31/2019	JPMorgan AM (EU) PO Box 275, 2012, Luxembourg Luxembourg <a href="https://www.jpmorganassetmanagement.de">https://www.jpmorganassetmanagement.de</a>			
KESr report funds	No				
Business year start	01.07.				
Sustainability type	-				
Fund manager	Andrew Norelli, Andrew Headley, Thomas Hauser				

Performance	1M	6M	YTD	1Y	2Y	3Y	5Y	Since start
Performance	+0.32%	+5.01%	+6.48%	+11.87%	+15.77%	+4.59%	+13.74%	+13.74%
Performance p.a.	-	-	-	+11.91%	+7.62%	+1.51%	+2.64%	+2.64%
Sharpe ratio	0.52	3.73	2.71	3.51	1.27	-0.47	-	-0.13
Volatility	1.53%	1.87%	1.94%	2.47%	3.43%	3.75%	0.00%	4.93%
Worst month	-	-0.39%	-0.39%	-0.41%	-1.83%	-3.99%	-9.82%	-9.82%
Best month	-	1.36%	2.34%	2.92%	2.92%	2.97%	2.97%	2.97%
Maximum loss	-0.47%	-0.74%	-0.76%	-0.99%	-3.35%	-10.72%	0.00%	-

Distribution permission

Austria, Germany, Switzerland, Czech Republic

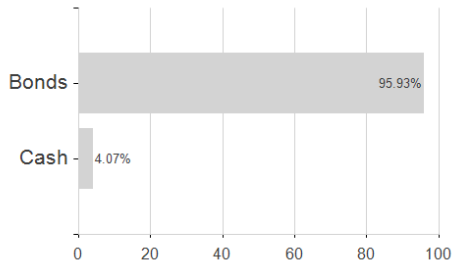
<sup>1</sup> Important note on update status: The displayed date refers exclusively to the calculation of the NAV.  
<sup>2</sup> The Mountain-View Data Fund Rating calculates a comparative ranking for funds using yield, volatility and trend data. For more information visit [MVD Funds Rating](#)

## JPMorgan Funds - Income Fund X (acc) - USD / LU1041601151 / A1XFAL / JPMorgan AM (EU)

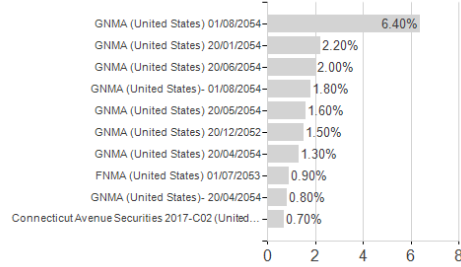
3 Displays the Ethical-Dynamical Ratio calculated according to standard criteria. The maximum value is 100. For more information visit [EDA](#)

### Assessment Structure

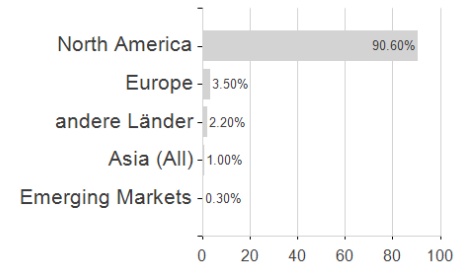
#### Assets



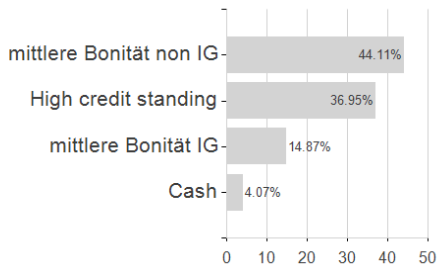
#### Largest positions



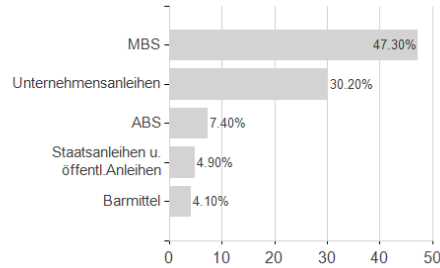
#### Countries



#### Rating



#### Issuer



#### Currencies

