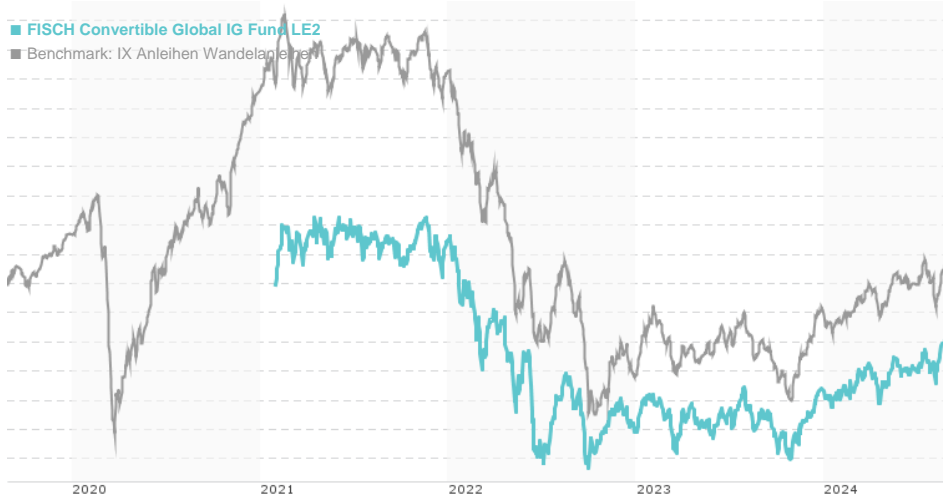


FISCH Convertible Global IG Fund LE2 / LU2272748166 / A2QL0L / Universal-Inv. (LU)

Last 08/26/2024 ¹	Region	Branch	Type of yield	Type
96.12 EUR	Worldwide	Convertible Bonds	paying dividend	Fixed-Income Fund



Risk key figures

SRI: 1 2 3 4 5 6 7

Mountain-View Funds Rating²: EDA³

68

Yearly Performance

2023	+3.29%
2022	-12.68%
2021	+2.96%

Master data		Conditions		Other figures	
Fund type	Fund of funds	Issue surcharge	3.00%	Minimum investment	EUR 3,000,000.00
Category	Bonds	Planned administr. fee	0.00%	Savings plan	-
Sub category	Convertible Bonds	Deposit fees	0.00%	UCITS / OGAW	Yes
Fund domicile	Luxembourg	Redemption charge	0.00%	Performance fee	0.00%
Tranch volume	(08/26/2024) EUR 31.08 mill.	Ongoing charges	-	Redeployment fee	0.00%
Total volume	(08/26/2024) EUR 68.26 mill.	Dividends		Investment company	
Launch date	1/29/2021	Universal-Inv. (LU)			
KESt report funds	Yes	15, rue de Flaxweiler, 6776, Grevenmacher			
Business year start	01.01.	Luxembourg			
Sustainability type	-	https://www.universal-investment.com			
Fund manager	Heyward Ute, Meyer Stefan, Nikolov Ivan				

Performance	1M	6M	YTD	1Y	2Y	3Y	5Y	Since start
Performance	+2.17%	+3.63%	+3.51%	+5.89%	+3.31%	-6.24%	-	-3.88%
Performance p.a.	-	-	-	+5.91%	+1.64%	-2.12%	-	-1.10%
Sharpe ratio	4.55	0.77	0.37	0.46	-0.34	-0.83	-	-0.68
Volatility	5.54%	5.08%	5.16%	5.28%	5.60%	6.80%	0.00%	6.80%
Worst month	-	-1.64%	-1.64%	-2.20%	-5.04%	-7.04%	0.00%	-7.04%
Best month	-	2.12%	2.12%	3.20%	3.20%	4.68%	0.00%	4.68%
Maximum loss	-1.50%	-2.95%	-2.95%	-3.70%	-6.07%	-16.44%	0.00%	-

Distribution permission

Austria, Germany, Switzerland, Luxembourg

¹ Important note on update status: The displayed date refers exclusively to the calculation of the NAV.

² The Mountain-View Data Fund Rating calculates a comparative ranking for funds using yield, volatility and trend data. For more information visit [MVD Funds Rating](#)

³ Displays the Ethical-Dynamical Ratio calculated according to standard criteria. The maximum value is 100. For more information visit [EDA](#)

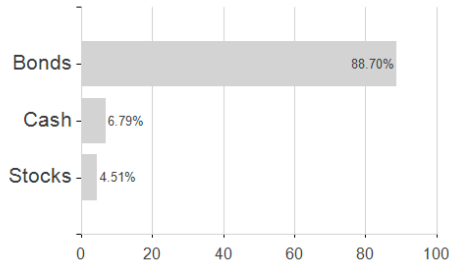
DISCLAIMER: The information on this page are for informational purposes only and should neither an offer to sell nor a solicitation for the purchase of the security or recommendation in favor of the security to be understood. baha GmbH assumes no liability despite thorough searches for the accuracy of the data.

Funds data from: www.mountain-view.com. Fact Sheet created by: www.baha.com

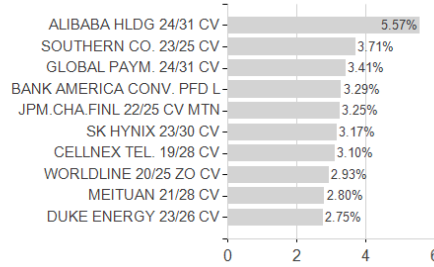
FISCH Convertible Global IG Fund LE2 / LU2272748166 / A2QL0L / Universal-Inv. (LU)

Assessment Structure

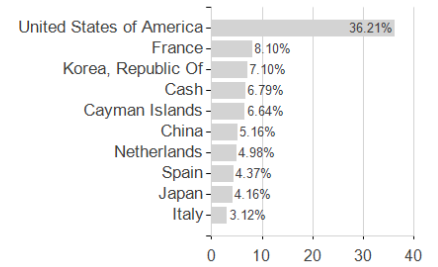
Assets



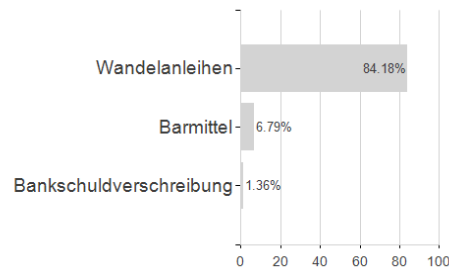
Largest positions



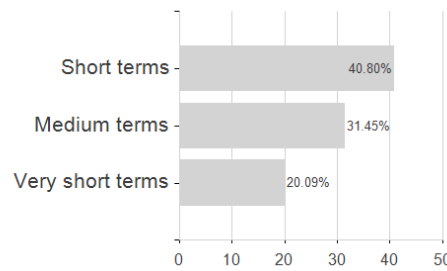
Countries



Issuer



Duration



Currencies

