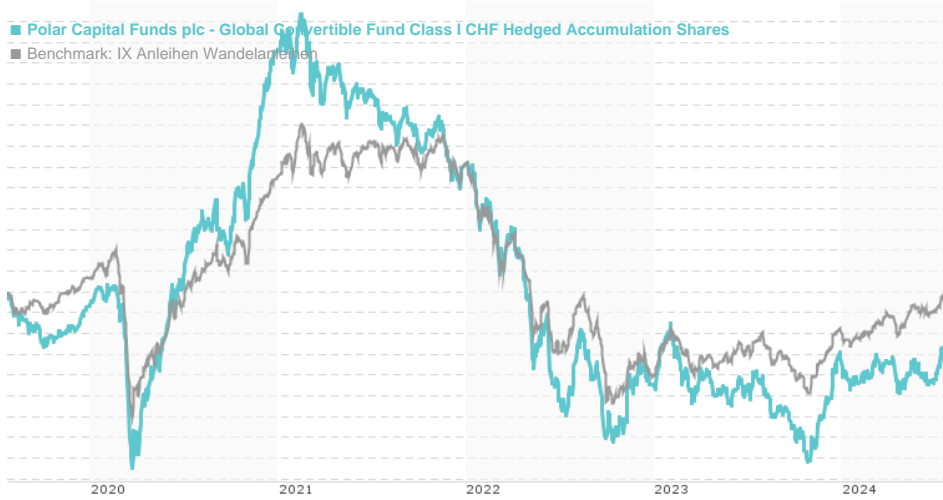


**Polar Capital Funds plc - Global Convertible Fund Class I CHF Hedged Accumulation Shares / IE00BMPHHW00 /**

Last 07/22/2024 <sup>1</sup>	Region	Branch	Type of yield	Type
9.58 CHF	Worldwide	Convertible Bonds	reinvestment	Fixed-Income Fund



<b>Risk key figures</b>	
SRI	1 2 3 4 5 6 7
Mountain-View Funds Rating <sup>2</sup>	EDA <sup>3</sup>
▲ ▲ ▲ ▲ ▲ ▲	
<b>Yearly Performance</b>	
2023	+2.88%
2022	-18.91%
2021	-8.82%
2020	+24.63%
2019	+5.49%

Master data		Conditions		Other figures	
Fund type	Single fund	Issue surcharge	5.00%	Minimum investment	USD 1,000,000.00
Category	Bonds	Planned administr. fee	0.00%	Savings plan	-
Sub category	Convertible Bonds	Deposit fees	0.00%	UCITS / OGAW	Yes
Fund domicile	Ireland	Redemption charge	0.00%	Performance fee	10.00%
Tranch volume	(07/22/2024) USD 0.000 mill.	Ongoing charges	-	Redeployment fee	0.00%
Total volume	-	<b>Dividends</b>		<b>Investment company</b>	
Launch date	6/13/2014	Polar Capital			
KESt report funds	No	16 Palace Street, SW1E 5JD, London			
Business year start	01.01.	United Kingdom			
Sustainability type	-	https://www.polarcapital.co.uk			
Fund manager	David Keetley, Stephen McCormick, David Sugarman				

Performance	1M	6M	YTD	1Y	2Y	3Y	5Y	Since start
Performance	+1.70%	+1.38%	-0.83%	+1.70%	+2.57%	-20.43%	-6.81%	-9.02%
Performance p.a.	-	-	-	+1.70%	+1.27%	-7.33%	-1.40%	-1.56%
Sharpe ratio	2.98	-0.14	-0.76	-0.26	-0.27	-1.18	-0.53	-0.58
Volatility	7.01%	6.78%	6.85%	7.54%	8.92%	9.33%	9.57%	9.13%
Worst month	-	-2.60%	-2.60%	-3.89%	-7.13%	-7.24%	-11.18%	-11.18%
Best month	-	1.39%	5.11%	6.37%	6.37%	6.37%	9.79%	9.79%
Maximum loss	-1.95%	-3.92%	-3.92%	-8.97%	-13.79%	-28.91%	-33.92%	-

**Distribution permission**

Austria, Germany, Switzerland

<sup>1</sup> Important note on update status: The displayed date refers exclusively to the calculation of the NAV.

<sup>2</sup> The Mountain-View Data Fund Rating calculates a comparative ranking for funds using yield, volatility and trend data. For more information visit [MVD Funds Rating](#)

<sup>3</sup> Displays the Ethical-Dynamical Ratio calculated according to standard criteria. The maximum value is 100. For more information visit [EDA](#)

**Polar Capital Funds plc - Global Convertible Fund Class I CHF Hedged Accumulation Shares / IE00BMPHHW00 /**

**Investment strategy**

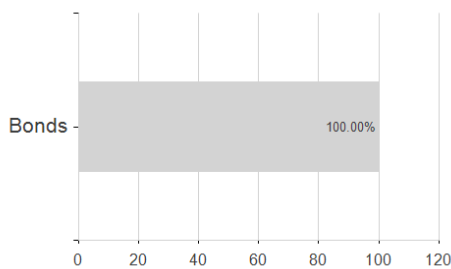
The Fund has a global focus and may invest in both developed and under-developed economies. All investments in convertible bonds are in securities listed on recognised stock exchanges. A convertible bond can be converted into a predetermined amount of the company's equity at certain times during its life, usually at the discretion of the bondholder. The Fund typically invests in convertible bonds rated B- or above by a recognised credit rating service, or in convertible bonds which have a comparable rating as determined by the Fund's manager. The Fund may, at any one time, be significantly invested in financial derivatives (complex instruments based upon the value of underlying assets). The Fund may take synthetic long positions to achieve leverage (multiplying gains or losses).

**Investment goal**

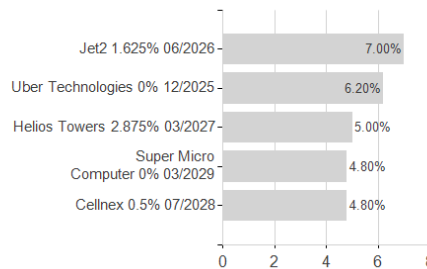
The objective of the Fund is to achieve both income and long term capital appreciation by investing in a globally diversified portfolio of convertible bonds and equivalents.

**Assessment Structure**

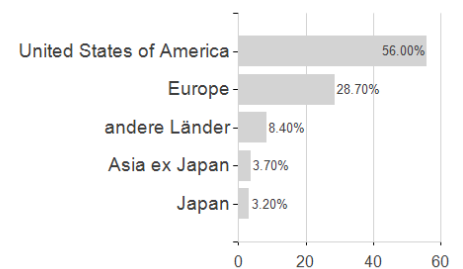
**Assets**



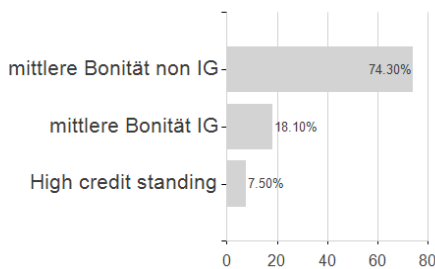
**Largest positions**



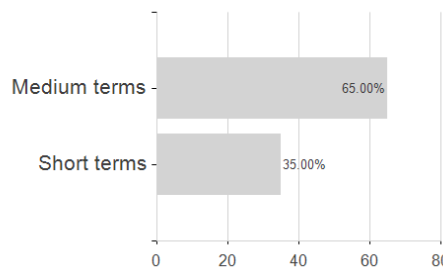
**Countries**



**Rating**



**Duration**



**Currencies**

