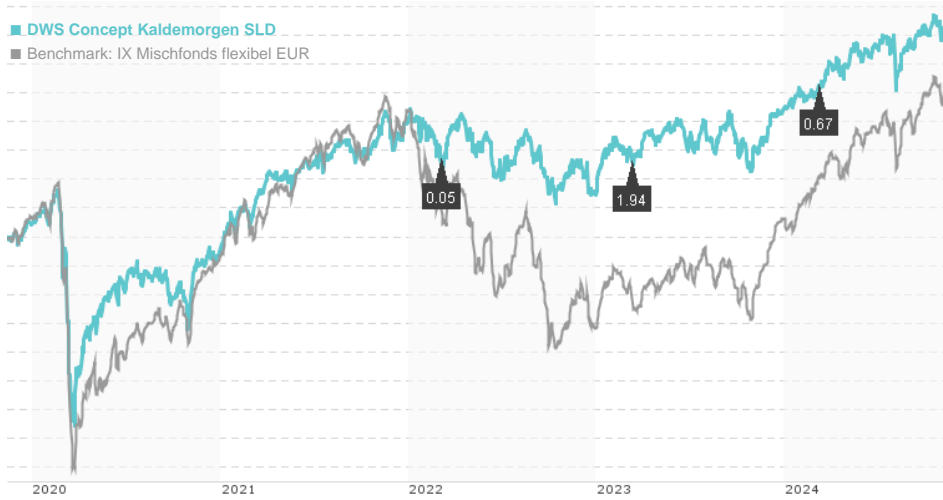


DWS Concept Kaldemorgen SLD / LU1606606942 / DWSK51 / DWS Investment SA

Last 11/12/2024 ¹	Region	Branch	Type of yield	Type
117.53 EUR	Worldwide	Mixed fund/flexible	paying dividend	Mixed Fund



Risk key figures

SRI	1	2	3	4	5	6	7
Mountain-View Funds Rating ²	EDA ³						
	80						

Yearly Performance

2023	+5.74%
2022	-4.78%
2021	+9.24%
2020	-1.88%
2019	+12.54%

Master data		Conditions		Other figures	
Fund type	Single fund	Issue surcharge	5.00%	Minimum investment	UNT 0
Category	Mixed Fund	Planned administr. fee	0.00%	Savings plan	-
Sub category	Mixed fund/flexible	Deposit fees	0.00%	UCITS / OGAW	Yes
Fund domicile	Luxembourg	Redemption charge	0.00%	Performance fee	15.00%
Tranch volume	(11/12/2024) EUR 1,014.06 mill.	Ongoing charges	-	Redeployment fee	0.00%
Total volume	(09/30/2024) EUR 14,399.23 mill.	Dividends		Investment company	
Launch date	5/15/2017	08.03.2024	0.67 EUR	DWS Investment SA	
KESt report funds	Yes	10.03.2023	1.94 EUR	Mainzer Landstraße 11-17, 60329, Frankfurt am Main	
Business year start	01.01.	04.03.2022	0.05 EUR	Germany	
Sustainability type	-	05.03.2021	0.37 EUR	https://www.dws.de	
		06.03.2020	0.05 EUR		

Fund manager	& Christoph Schmidt, Klaus Kaldemorgen							
Performance	1M	3M	YTD	1Y	2Y	3Y	5Y	Since start
Performance	+0.04%	+1.76%	+5.58%	+8.49%	+9.06%	+6.16%	+14.80%	+22.42%
Performance p.a.	-	-	-	+8.49%	+4.44%	+2.01%	+2.80%	+2.73%
Sharpe ratio	-0.46	0.09	0.73	1.19	0.30	-0.20	-0.04	-0.05
Volatility	5.40%	5.40%	4.76%	4.61%	4.71%	5.08%	6.17%	5.59%
Worst month	-	-0.47%	-0.47%	-0.47%	-1.98%	-2.88%	-6.43%	-6.43%
Best month	-	1.05%	2.13%	2.26%	3.10%	3.10%	4.60%	4.60%
Maximum loss	-1.53%	-3.38%	-3.38%	-3.38%	-3.88%	-6.00%	-15.88%	-

Distribution permission

Austria, Germany, Switzerland, Czech Republic

¹ Important note on update status: The displayed date refers exclusively to the calculation of the NAV.
² The Mountain-View Data Fund Rating calculates a comparative ranking for funds using yield, volatility and trend data. For more information visit [MVD Funds Rating](#)
³ Displays the Ethical-Dynamical Ratio calculated according to standard criteria. The maximum value is 100. For more information visit [EDA](#)
 DISCLAIMER: The information on this page are for informational purposes only and should neither an offer to sell nor a solicitation for the purchase of the security or recommendation in favor of the security to be understood. baha GmbH assumes no liability despite thorough searches for the accuracy of the data.
 Funds data from: www.mountain-view.com. Fact Sheet created by: www.baha.com
 Created: 11/13/2024

DWS Concept Kaldemorgen SLD / LU1606606942 / DWSK51 / DWS Investment SA

Investment strategy

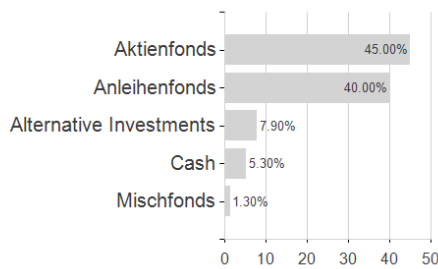
In order to achieve this, the fund invests up to 100% of its assets in equities, bonds, certificates, money market instruments and cash. In addition the fund may invest in derivatives for hedging and investment purposes, among others in order to hedge market risks. The fund will invest in different markets and instruments depending on the overall economic cycle and assessment of the fund management. Up to 20% may be invested into asset backed securities. When selecting investments, environmental and social aspects and the principles of good corporate governance (ESG aspects) are taken into consideration alongside the financial performance.

Investment goal

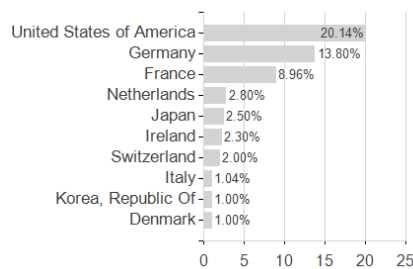
The fund is actively managed. The fund is not managed in reference to a benchmark. The fund promotes environmental and social characteristics and is subject to the disclosure requirements of a financial product in accordance with article 8(1) of Regulation (EU) 2019/2088 on sustainability-related disclosures in the financial services sector. More ESG information is available in the sales prospectus and on the DWS website. The objective of the investment policy is to achieve capital growth.

Assessment Structure

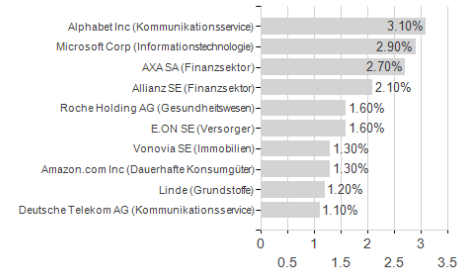
Assets



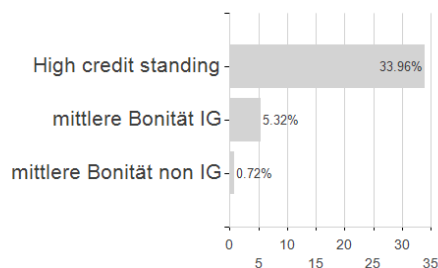
Countries



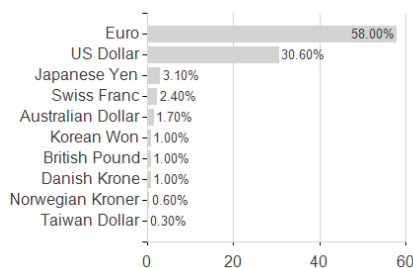
Largest positions



Rating



Currencies



Branches

