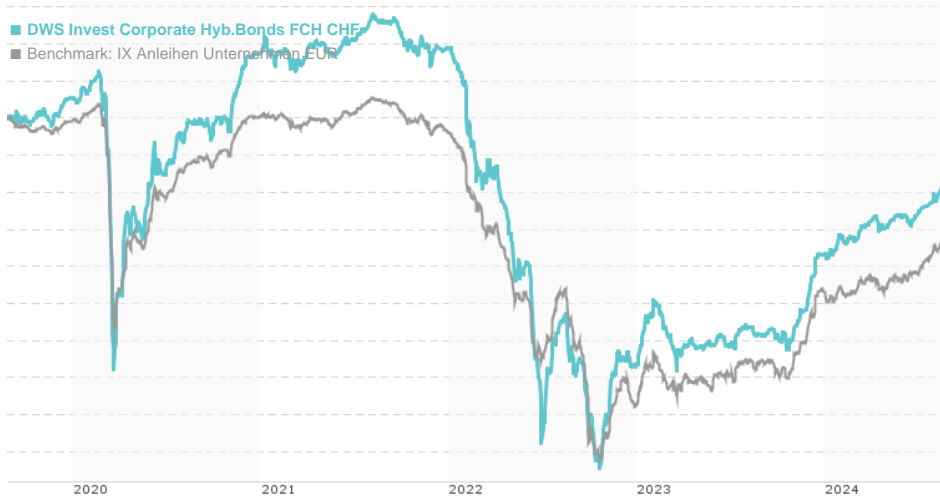


DWS Invest Corporate Hyb.Bonds FCH CHF / LU1292896518 / DWS2DH / DWS Investment SA

| | | | | |
|------------------------------|-----------|-----------------|---------------|-------------------|
| Last 08/26/2024 ¹ | Region | Branch | Type of yield | Type |
| 118.58 CHF | Worldwide | Corporate Bonds | reinvestment | Fixed-Income Fund |



Risk key figures

| | | | | | | | |
|---|------------------|---|---|---|---|---|---|
| SRI | 1 | 2 | 3 | 4 | 5 | 6 | 7 |
| Mountain-View Funds Rating ² | EDA ³ | | | | | | |
| | 65 | | | | | | |

Yearly Performance

| | |
|------|---------|
| 2023 | +6.94% |
| 2022 | -16.51% |
| 2021 | +0.19% |
| 2020 | +2.45% |
| 2019 | +12.44% |

| Master data | | Conditions | | Other figures | |
|---------------------|-------------------------------|--|-------|---------------------------|------------------|
| Fund type | Single fund | Issue surcharge | 0.00% | Minimum investment | CHF 2,000,000.00 |
| Category | Bonds | Planned administr. fee | 0.00% | Savings plan | - |
| Sub category | Corporate Bonds | Deposit fees | 0.00% | UCITS / OGAW | Yes |
| Fund domicile | Luxembourg | Redemption charge | 0.00% | Performance fee | 0.00% |
| Tranch volume | (08/26/2024) EUR 4.81 mill. | Ongoing charges | - | Redeployment fee | 0.00% |
| Total volume | (06/28/2024) EUR 240.30 mill. | Dividends | | Investment company | |
| Launch date | 9/7/2015 | DWS Investment SA | | | |
| KESt report funds | No | Mainzer Landstraße 11-17, 60329, Frankfurt am Main | | | |
| Business year start | 01.01. | Germany | | | |
| Sustainability type | - | https://www.dws.de | | | |
| Fund manager | Berger, Max | | | | |

| Performance | 1M | 6M | YTD | 1Y | 2Y | 3Y | 5Y | Since start |
|------------------|--------|--------|--------|--------|---------|---------|---------|-------------|
| Performance | +1.19% | +3.20% | +4.25% | +9.33% | +10.20% | -8.18% | -3.36% | +9.65% |
| Performance p.a. | - | - | - | +9.36% | +4.97% | -2.80% | -0.68% | +1.19% |
| Sharpe ratio | 6.05 | 2.05 | 2.03 | 2.98 | 0.41 | -1.39 | -0.86 | -0.55 |
| Volatility | 1.90% | 1.46% | 1.52% | 1.97% | 3.53% | 4.54% | 4.92% | 4.26% |
| Worst month | - | -0.37% | -0.37% | -0.51% | -4.37% | -10.52% | -10.52% | -10.52% |
| Best month | - | 1.08% | 2.71% | 2.71% | 4.02% | 7.20% | 7.20% | 7.20% |
| Maximum loss | -0.44% | -0.88% | -0.88% | -1.26% | -7.46% | -23.09% | -23.21% | - |

Distribution permission

Austria, Germany, Switzerland, Czech Republic

¹ Important note on update status: The displayed date refers exclusively to the calculation of the NAV.

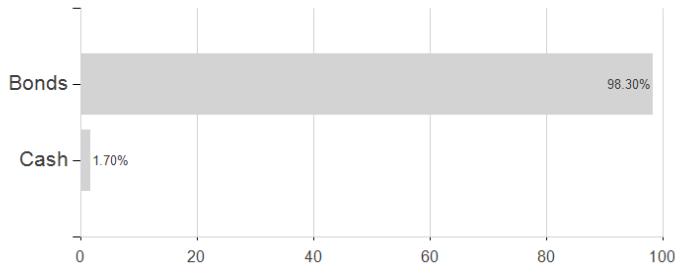
² The Mountain-View Data Fund Rating calculates a comparative ranking for funds using yield, volatility and trend data. For more information visit [MVD Funds Rating](#)

³ Displays the Ethical-Dynamical Ratio calculated according to standard criteria. The maximum value is 100. For more information visit [EDA](#)

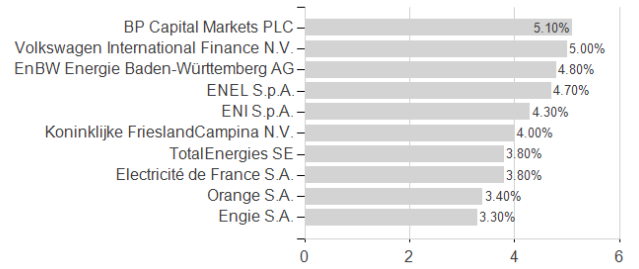
DWS Invest Corporate Hyb.Bonds FCH CHF / LU1292896518 / DWS2DH / DWS Investment SA

Assessment Structure

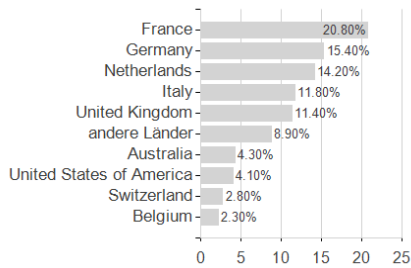
Assets



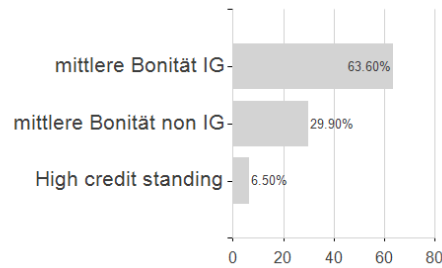
Largest positions



Countries



Rating



Currencies

