

Man Global Convertibles IL USD / IE00B29Z0B02 / A0NGUR / Man AM (IE)

Last 11/11/2024 ¹	Region	Branch	Type of yield	Type
158.19 USD	Worldwide	Convertible Bonds	reinvestment	Fixed-Income Fund



Risk key figures

SRI	1	2	3	4	5	6	7
Mountain-View Funds Rating ²	EDA ³						
	▲ ▲ ▲ ▲ ▲ ▲ ▲						

Yearly Performance

2023	+9.23%
2022	-14.09%
2021	+0.71%
2020	+11.71%
2019	+11.30%

Master data		Conditions		Other figures	
Fund type	Single fund	Issue surcharge	0.00%	Minimum investment	USD 1,000,000.00
Category	Bonds	Planned administr. fee	0.00%	Savings plan	-
Sub category	Convertible Bonds	Deposit fees	0.04%	UCITS / OGAW	Yes
Fund domicile	Ireland	Redemption charge	0.00%	Performance fee	20.00%
Tranch volume	(11/11/2024) USD 2.25 mill.	Ongoing charges	-	Redeployment fee	0.00%
Total volume	(11/11/2024) USD 101.09 mill.	Dividends		Investment company	
Launch date	3/11/2008			Man AM (IE)	
KESt report funds	No			70 Sir John Rogerson's Quay, Dublin 2, Dublin 2	
Business year start	01.01.			Ireland	
Sustainability type	-			https://www.man.com	
Fund manager	Danilo Rippa				

Performance	1M	6M	YTD	1Y	2Y	3Y	5Y	Since start
Performance	+1.63%	+8.93%	+9.42%	+17.23%	+18.78%	+1.71%	+16.85%	+51.70%
Performance p.a.	-	-	-	+17.28%	+8.97%	+0.57%	+3.16%	+3.11%
Sharpe ratio	2.52	2.59	1.45	2.52	1.02	-0.33	0.02	0.01
Volatility	7.10%	6.06%	5.49%	5.67%	5.83%	7.45%	6.87%	5.60%
Worst month	-	0.17%	-1.60%	-1.60%	-2.72%	-6.15%	-6.17%	-6.17%
Best month	-	3.29%	4.25%	4.63%	4.63%	4.89%	7.00%	7.00%
Maximum loss	-1.02%	-3.10%	-3.10%	-3.10%	-6.28%	-19.49%	-19.75%	-

Distribution permission

Austria, Germany, Switzerland, United Kingdom, Czech Republic

1 Important note on update status: The displayed date refers exclusively to the calculation of the NAV.
 2 The Mountain-View Data Fund Rating calculates a comparative ranking for funds using yield, volatility and trend data. For more information visit [MVD Funds Rating](#)
 3 Displays the Ethical-Dynamical Ratio calculated according to standard criteria. The maximum value is 100. For more information visit [EDA](#)

Man Global Convertibles IL USD / IE00B29Z0B02 / A0NGUR / Man AM (IE)

Investment strategy

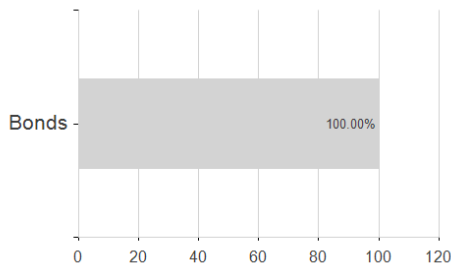
The Fund will invest primarily in listed or traded debt securities and preference shares which are capable of conversion into shares. Particular focus will be paid to the credit quality of individual issuers, the cost to convert the debt into shares and the projected return (yield) of the debt securities. The debt securities in which the Fund invests can have a fixed or floating rate of interest, be issued by a government, corporation or other entity, and be rated investment grade or, non-investment grade. The Fund may also invest directly in shares (or related instruments), cash and other debt securities. The Fund will invest primarily in securities listed or traded on Recognised Markets in OECD member states and other countries.

Investment goal

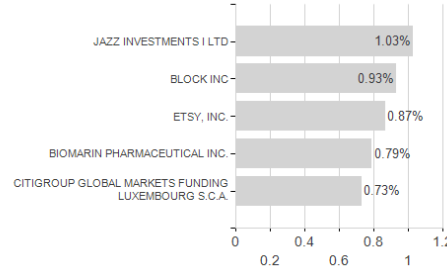
The Fund's investment objective is to achieve compounded appreciation of the investor's capital through investing globally in an actively managed portfolio of convertible bonds, convertible preference shares, debt securities, warrants and other equity-linked securities, including but not limited to such instruments as stock options and equity swaps, with less volatility than a portfolio of the underlying equities in the international securities markets.

Assessment Structure

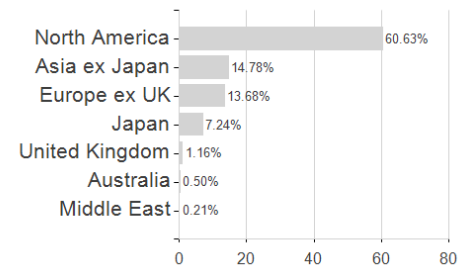
Assets



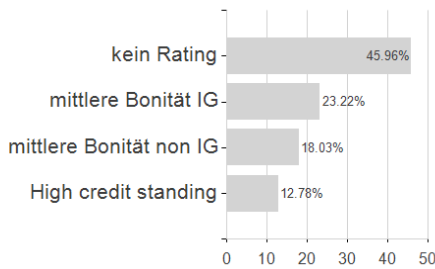
Largest positions



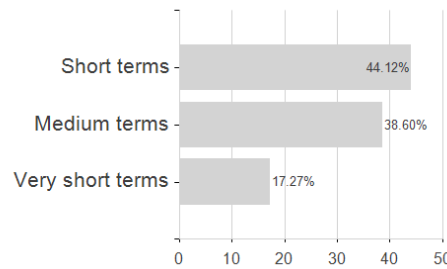
Countries



Rating



Duration



Branches

